



2/504 Nepean Highway Bonbeach VIC

3  2  2 

Perfectly positioned just moments from the sand, this stunning 3-bedroom residence delivers the ultimate bayside lifestyle with space, style and low-maintenance living.

Price : EXPRESSION OF INTEREST \$1,250,000 - \$1,375,000

View : <https://www.ypa.com.au/8718481>

Featuring two spacious living zones, a beautifully appointed stone kitchen, north-facing outdoor entertaining deck and double garage with laneway access, this freestanding home offers comfort and convenience in equal measure.

Enjoy morning walks along the beach, nearby cafes, shops, schools and transport all within easy reach.

- 3 bedrooms | 2 bathrooms | Double garage
- No active Owners Corporation
- North-facing entertaining deck
- Study/home office

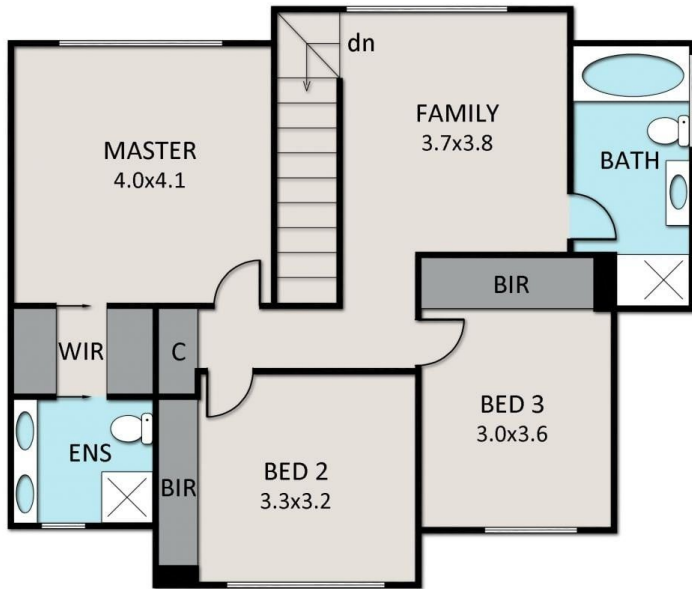


Chris Fahl
0404 668 818

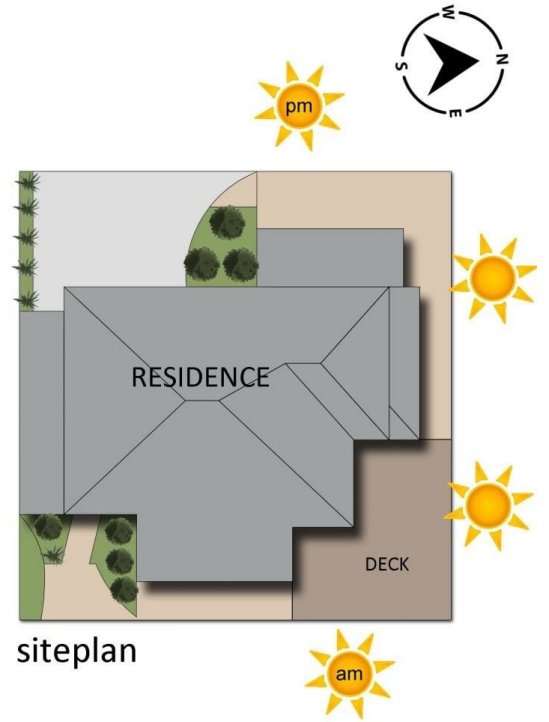


Brie Bond
0432 524 998

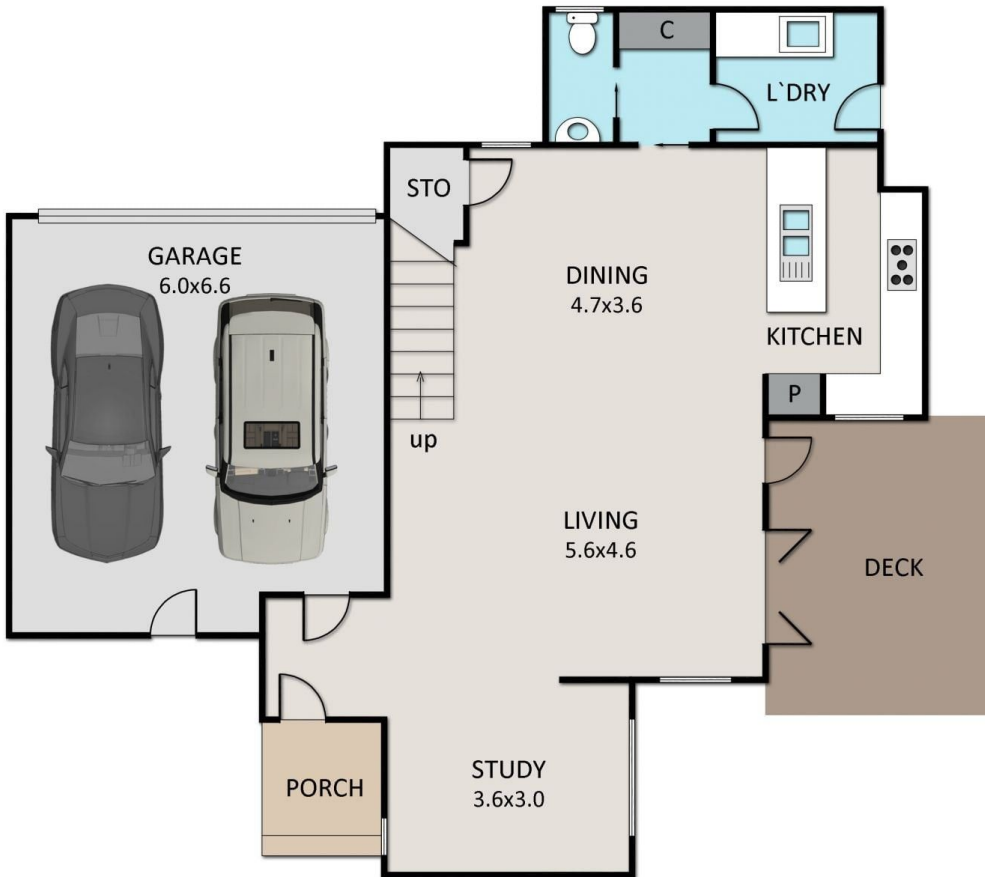
2/504 Nepean Highway, Bonbeach



first floor



siteplan



ground floor

Areas (approx):

Residence:	170m ²
Garage:	40m ²
Total:	210m ²
	22.6 squares
Land Size:	229m ²