

1 Faldo Street Aintree VIC

4 2 2

This exceptional residence offers the perfect blend of luxury, functionality and lifestyle convenience. Proudly presented by YPA and located in the prestigious Woodlea Estate, this home is a standout opportunity for families seeking comfort, space and a premium address. This is your chance to secure a high-quality home in one of the area's most highest demanding communities.

Property Highlights:

- ? Master suite featuring a walk-in wardrobe and private ensuite with stone bench top and premium fittings
- ? Three additional generously sized bedrooms, each with built-in wardrobes
- ? Light-filled open-plan meals and family area seamlessly connected to the kitchen
- ? Stylish kitchen with Caesarstone benchtops, walk-in pantry, ample storage, stainless steel appliances including

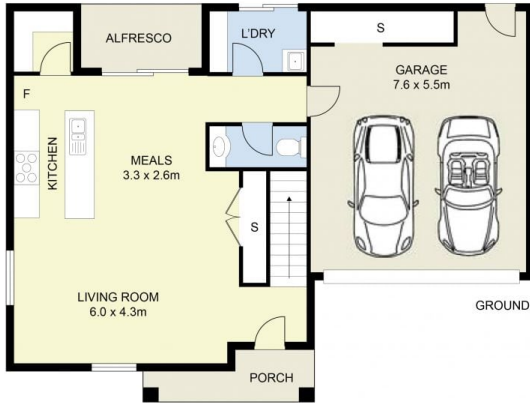
Price : PRIVATE SALE | \$649,000 - \$699,000
Land Size : 293 sqm
View : <https://www.ypa.com.au/8718296>



Andrew Migliorisi
0432 526 844



Ajet Jumeri
0450 940 041



1 Faldo Street, Aintree

DISCLAIMER : ALL DIMENSIONS ARE AN APPROXIMATION ONLY AND NO GUARANTEE IS GIVEN WITH RESPECT TO ACCURACY.