

## 41 Lancefield Circuit Eynesbury VIC

4 2 2

Perfectly positioned within one of Eynesbury's most desirable and family-friendly pockets, and set on an impressive approx. 560m<sup>2</sup>(approx.) allotment, the home offers exceptional space both inside and out, enhancing its overall appeal and versatility. It presents an outstanding opportunity to secure a beautifully appointed home that effortlessly combines modern comfort, functional design and lifestyle convenience. Surrounded by picturesque parklands, walking trails and all the amenities that make Eynesbury such a sought-after community, this impressive residence is perfectly suited to growing families, first home buyers and savvy investors alike.

Upon arrival, the home immediately captivates with its beautifully established and meticulously maintained gardens, creating a stunning first impression from the moment you arrive. Adding both convenience and security,

**Price** : \$899,000- \$959,000  
**Land Size** : 560 sqm  
**View** : <https://www.ypa.com.au/8718225>

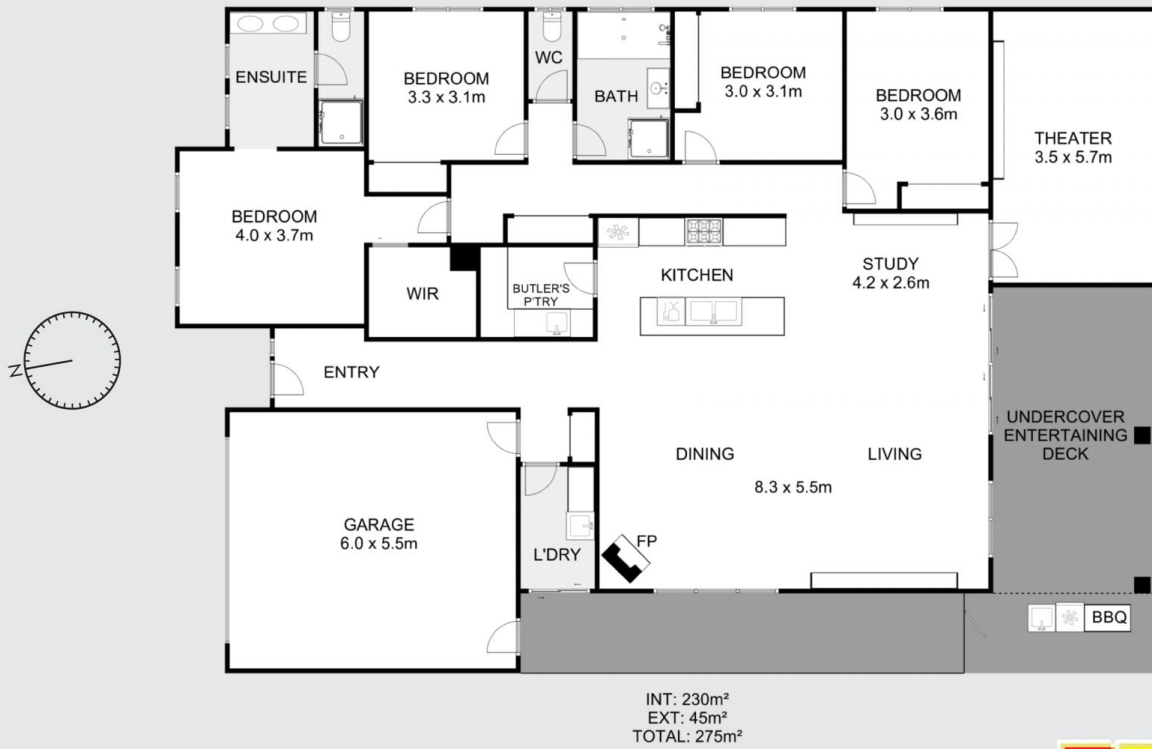


**Ryan Anders**  
0434 900 300



**Cheyenne Kollar**  
0484 385 522

# 41 Lancefield Circuit EYNESBURY



Indicative only. Dimensions are approximate. All information contained herein is gathered from sources we believe to be reliable. However, we cannot guarantee its accuracy and interested persons should rely on their own enquiries.