



## 1/315 Camp Road Broadmeadows VIC

3 2 2

Located centrally amongst every amenity the suburb has to offer, this two-storey town home offers an outstanding opportunity for anyone seeking a high-quality, modern, convenient, low maintenance lifestyle or wanting to secure an investment property with stability and great return potential.

Immaculately-presented, the home's interior comprises of 3 large bedrooms serviced by 2 spotless bathrooms, plus an extra guest powder room, double automatic garage and generous front and backyard spaces ensuring privacy and flexibility for any occupier. Enjoy the comforts of a light filled, north facing, open plan family living and dining space. While being positioned within walking proximity to schools, shops, medical, transport, dining, sporting and more.

As well as providing easy access onto major roads such as Camp Road, Johnstone Street, Hume Hwy and

**Price** : \$600,000 - \$660,000

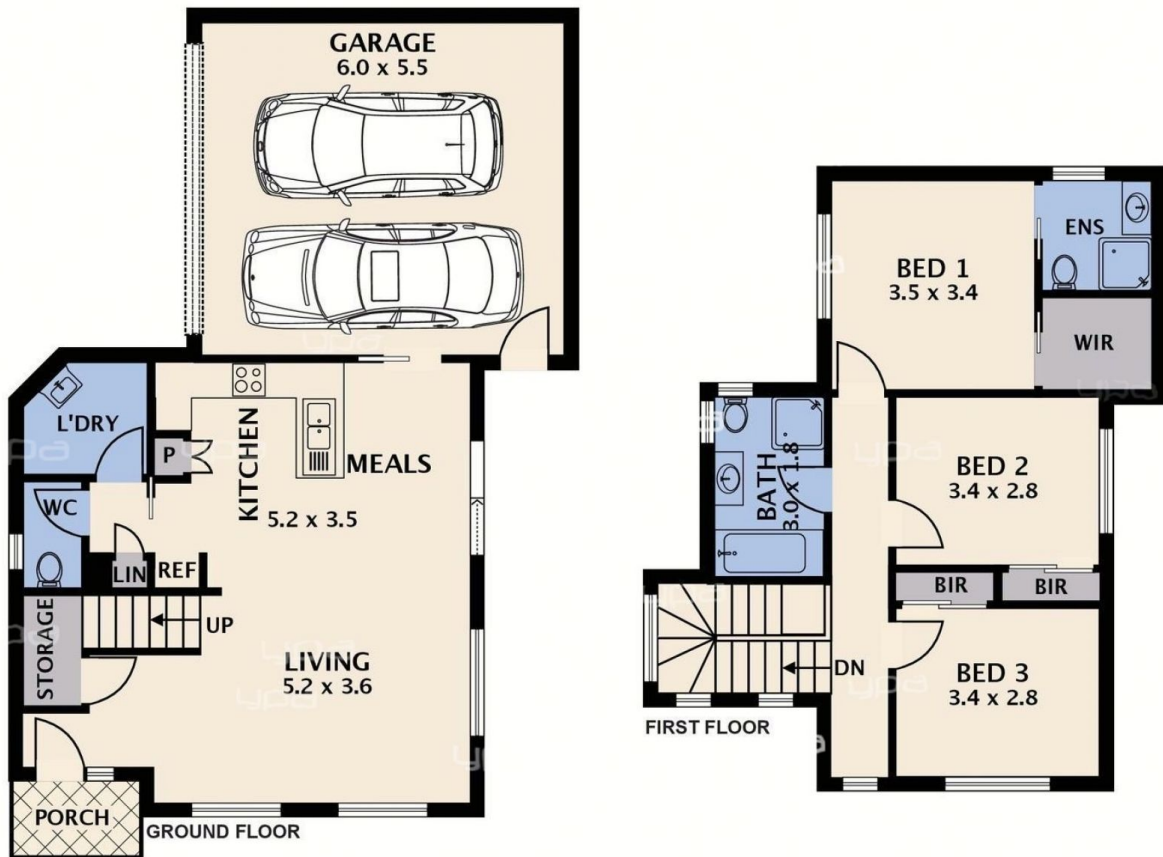
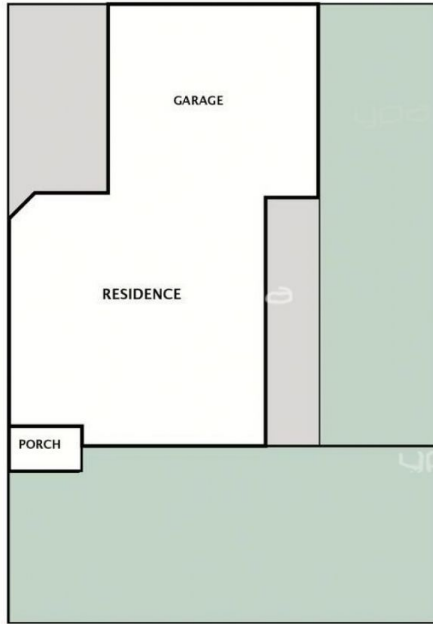
**View** : <https://www.ypa.com.au/8718062>



**Melissa Abela**  
0405 264 150



**Ali Faour**  
0432 273 353



Disclaimer. Please note plans are indicative only and not drawn to exact scale. All dimensions are approximate. Potential buyers view the property in person.

