



## 2 Kenilworth Crescent Waterford QLD

3  2  2 

Some homes simply have a soul and this is one of them. Nestled in the heart of the beloved Woodlands Estate, 2 Kenilworth Crescent is a stunning character-filled residence that radiates warmth, charm, and a sense of arrival the moment you pull into the street.

Sitting pretty on a corner block with a freshly updated facade and new perimeter fencing, this is a home that has been lovingly maintained and is completely ready to occupy? just bring your furniture and settle in. Whether you are a young family seeking space to grow, a first home buyer chasing that rare combination of character and convenience, or a savvy downsizer ready to trade size for soul, this property speaks to all of them equally.

A Home That Welcomes You In  
Step through the front door and the character hits you

**Price** : JUST LISTED  
**Land Size** : 327 sqm  
**View** : <https://www.ypa.com.au/8704025>



**Steven Spiteri**  
0423 428 079



**Sebastian Powell**  
0402 556 125

2 Kenilworth Crescent,  
Waterford QLD 4133,  
AUSTRALIA

Internal 105m<sup>2</sup>  
External 48m<sup>2</sup>  
Total 153m<sup>2</sup>  
Land Size 327m<sup>2</sup>

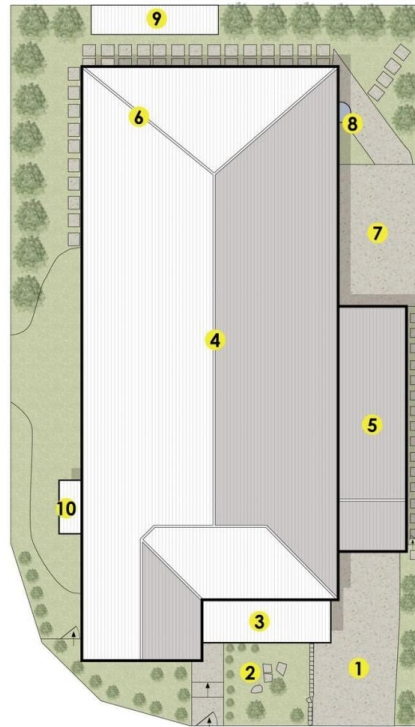


Disclaimer: This floor plan has been prepared to provide a visual guide to the property layout and features. All measurements and details are approximate and may be subject to change. This document is not intended for legal or construction use. May not be copied, reproduced, or modified without prior written consent.

\* Denotes approximate measurements at its widest points.



Ground Floor



Site Plan

Legend

1. Driveway
2. Front Yard
3. Covered Porch
4. Residence
5. Covered Carport
6. Undercover Alfresco
7. Patio
8. Hot Water
9. Bar
10. Shed

