



14 Fowler Place Aintree VIC

3 2 2

Don't miss your opportunity to secure a quality home in the highly sought-after and rapidly growing Woodlea Estate in Aintree. Whether you're a first home buyer, downsizer or a savvy investor, this outstanding property delivers the ideal balance of modern design, functionality, and long-term potential. Set within a vibrant, master-planned community, you'll enjoy immediate access to beautiful parklands, peaceful wetlands, scenic walking trails, quality schools, local shops and public transport - plus a host of exciting new amenities just moments away.

Property Highlights

- ? Master suits complete with walk-in wardrobe and private ensuite
- ? Two additional generously sized bedrooms with built-in robes
- ? Light-filled open-plan meals and family domain

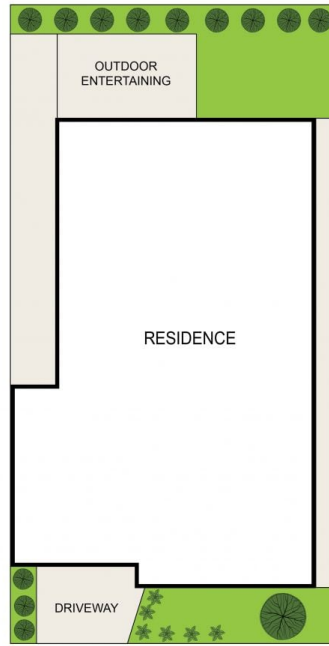
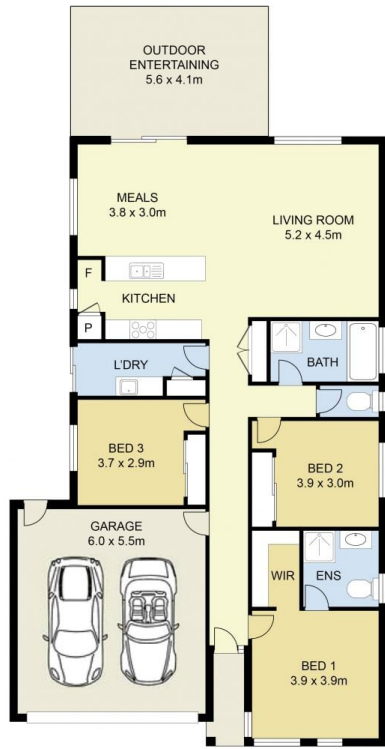
Price : PRIVATE SALE | \$649,000 - \$699,000
Land Size : 350 sqm
View : <https://www.ypa.com.au/8703490>



Andrew Migliorisi
0432 526 844



Ajet Jumeri
0450 940 041



SITE PLAN
(NOT TO SCALE)

14 Fowler Place, Aintree



DISCLAIMER : ALL DIMENSIONS ARE AN APPROXIMATION ONLY AND NO GUARANTEE IS GIVEN WITH RESPECT TO ACCURACY.