



7 Howmans Road Werribee VIC

4 2 2

YPA Point Cook proudly presents another exceptional family masterpiece at 7 Howmans Road, Werribee ? a stunning Metricon built residence that effortlessly blends modern elegance with practical family living. Meticulously designed with comfort, space, and lifestyle in mind, this beautiful home is a true standout in one of Werribee's fastest-growing and most family-friendly pockets.

Boasting an impressive modern facade with clean architectural lines, landscaped front gardens, and a welcoming porch entrance, the home immediately captures attention from the street. A double driveway leading to the secure double garage adds both practicality and strong street appeal.

Step inside and be welcomed by a wide and inviting entrance complemented by soaring high ceilings,

Price : Private Sale \$795,000 - \$845,000
Building Size : 25.43 Sqrs
Land Size : 392 sqm
View : <https://www.ypa.com.au/8702017>

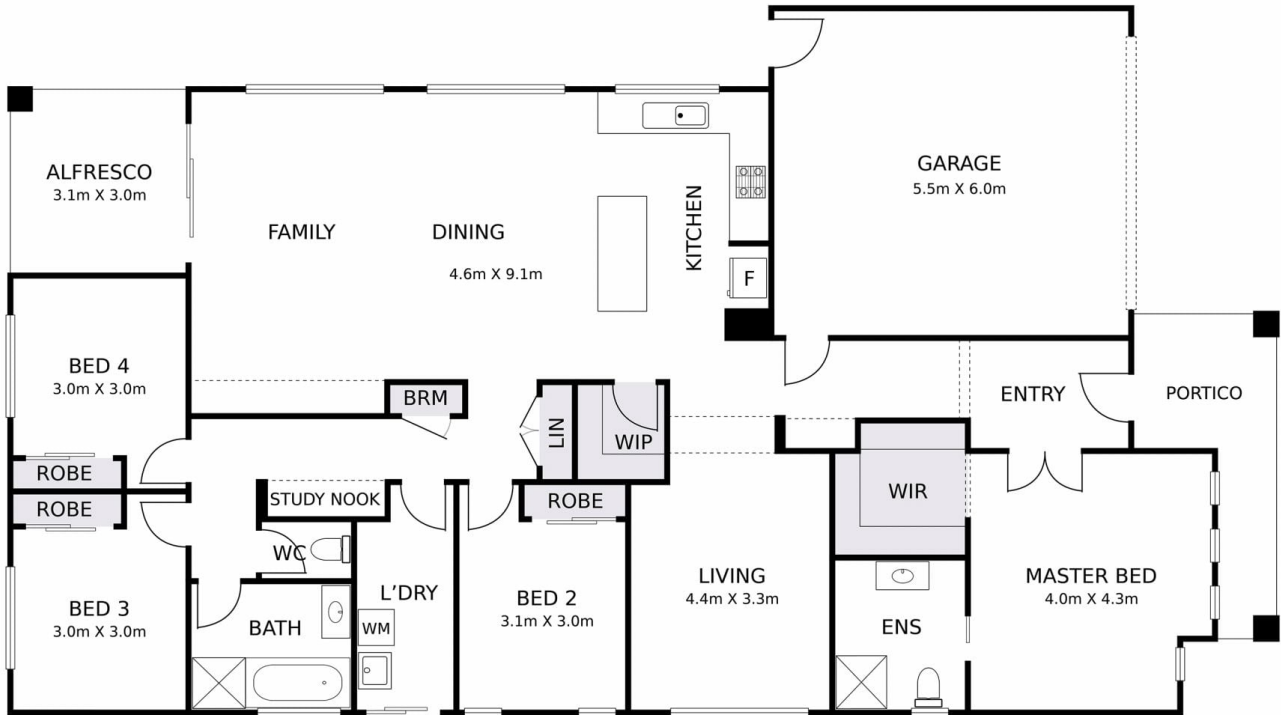


Amit Chahal
0437 779 139



Vishesh Lather
0470 618 967

7 HOWMANS ROAD, WERRIBEE



DISCLAIMER: THIS FLOOR PLAN IS A VISUAL GUIDE ONLY AND MAY CONTAIN INACCURACIES IN MEASUREMENTS, LAYOUT, ROOM NAMES OR FEATURES. NO WARRANTY IS GIVEN AS TO ITS ACCURACY. INTERESTED PARTIES MUST CONDUCT THEIR OWN DUE DILIGENCE.

