



## 51 Gillespie Drive Weir Views VIC

4  2  2 

Located in the growing and family-friendly suburb of Weir Views, this modern home at 51 Gillespie Drive presents an outstanding opportunity for first home buyers, investors, or families seeking comfort, convenience, and contemporary style.

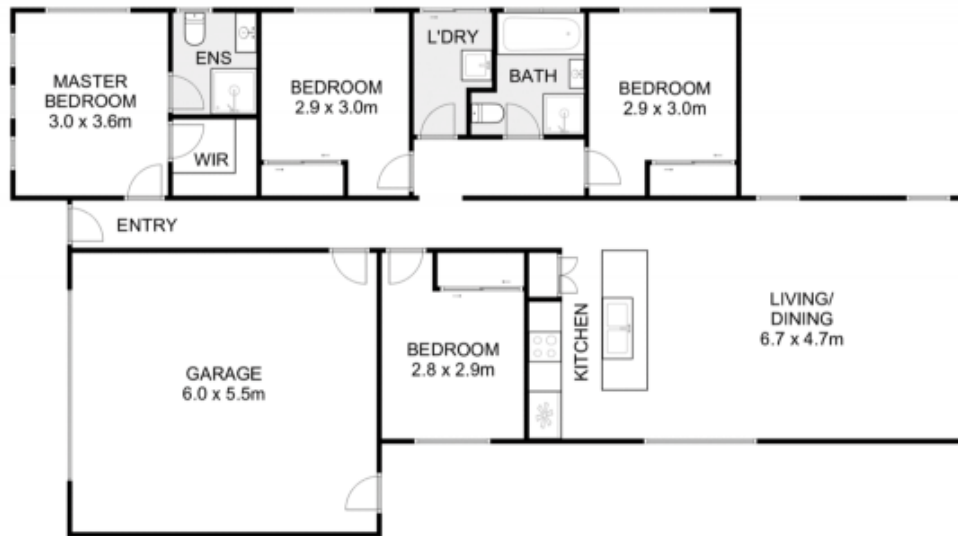
Less than six years old, the home offers four bedrooms, including a spacious master suite complete with a walk-in robe and private ensuite. Bedrooms two, three, and four are all fitted with built-in robes, providing excellent storage throughout.

At the heart of the home is a fantastic modern kitchen featuring stone benchtops, dishwasher, 600mm stainless steel appliances, overhead cupboards, and ample preparation space, all overlooking the open-plan meals and living area. Designed for easy everyday living and

**Price** : \$580,000 - \$610,000  
**Land Size** : 381 sqm  
**View** : <https://www.ypa.com.au/8701644>



**Cory Cassar**  
0422 765 386



## 51 Gillespie Drive, Weir Views



Whilst every attempt has been made to ensure the accuracy of the floor plan contained here, measurements of doors, windows, rooms and any other items are approximate and no responsibility is taken for any error, omission, or mis-statement. This plan is for illustrative purposes only and should be used as such by any prospective purchaser. The services, systems and appliances shown have not been tested and no guarantee as to their operability or efficiency can be given.

