

4 Eaglevale Road WEIR VIEWS VIC

4 🏠 2 🚗 2 🚗

Located in the highly sought-after and fast-growing suburb of Weir Views, this beautifully presented home is ideally positioned close to a range of amenities including all levels of schooling, local parks, freeway access, Melton South & Opalia Shopping Centre, and both Melton and Cobblebank Train Stations ? this is an ideal opportunity for first-home buyers, downsizers, or savvy investors alike.

Price : \$599,000- \$639,000

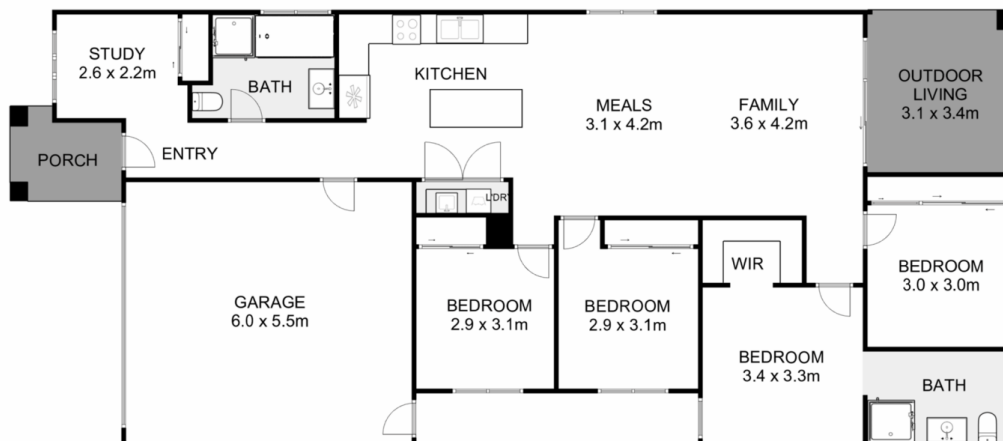
View : <https://www.ypa.com.au/8700200>

Step inside this low-maintenance, open-plan home and be immediately impressed by the thoughtful and versatile design. From the moment you enter, the front room offers endless potential as a study, additional living area, or even a nursery to suit your lifestyle needs.

The heart of the home is the beautifully appointed kitchen complete with stainless-steel appliances (900mm gas cooktop & electric oven), dishwasher, stone benchtops, ample cabinetry and seamlessly connected to a spacious



Tahlia Hall
0422 419 589



4 Eaglevale Road, Weir Views

Whilst every attempt has been made to ensure the accuracy of the floor plan contained here, measurements of doors, windows, rooms and any other items are approximate and no responsibility is taken for any error, omission, or mis-statement. This plan is for illustrative purposes only and should be used as such by any prospective purchaser. The services, systems and appliances shown have not been tested and no guarantee as to their operability or efficiency can be given.

