



12 Fitzpatrick Drive Altona Meadows VIC

4 2 4

Mohit, Kash & YPA Proudly presented 12 Fitzpatrick Drive, Altona Meadows. Perfectly positioned in a peaceful court location, this beautifully maintained residence delivers the ultimate family lifestyle with generous proportions, multiple living zones, and exceptional versatility on an expansive 787m². This outstanding home offers the perfect blend of comfort, convenience, and future potential in one of Altona Meadows' most desirable pockets.

From the moment you arrive, the home immediately impresses with its welcoming façade, spacious layout, and warm family atmosphere. Thoughtfully designed for growing families, entertainers, and savvy investors alike, this residence provides a rare opportunity to secure a property that truly stands out from the rest.

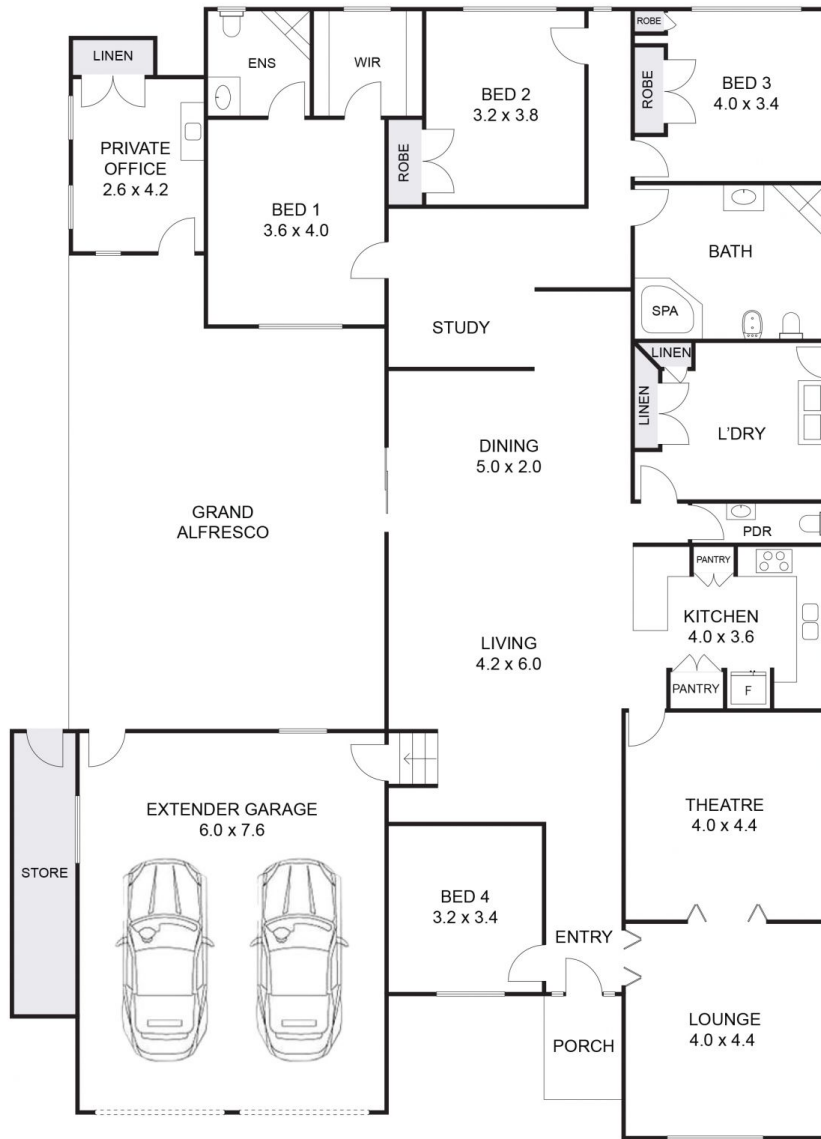
Step inside and discover a spacious floorplan featuring four

Price : \$1,050,000 - \$1,100,000
Land Size : 787 sqm
View : <https://www.ypa.com.au/8698189>



Mohit Kaushal
03 9395 1222

12 FITZPATRICK DRIVE, ALTONA MEADOWS, VIC



DISCLAIMER: THIS FLOOR PLAN IS A VISUAL GUIDE ONLY AND MAY CONTAIN INACCURACIES IN MEASUREMENTS, LAYOUT, ROOM NAMES OR FEATURES. NO WARRANTY IS GIVEN AS TO ITS ACCURACY. INTERESTED PARTIES MUST CONDUCT THEIR OWN DUE DILIGENCE.

