

15 Mahogany Close Hampton Park VIC

3  2  2 

Perfectly positioned in a quiet court location, this well-maintained family home offers comfort, convenience and lifestyle all in one. Featuring 3 spacious bedrooms, 2 bathrooms and a double garage, this property is ideal for families, couples or professionals looking for a home in the heart of Hampton Park.

Designed for easy living, the home offers a functional floorplan with generous living and dining spaces, a well-appointed kitchen and a fantastic alfresco area - perfect for year-round entertaining with family and friends.

Situated on a generous block, the property is conveniently located close to all essential amenities including schools, shopping centres, parks and public transport.

Property Features:

Price : \$610 Per Week

View : <https://www.ypa.com.au/8697937>

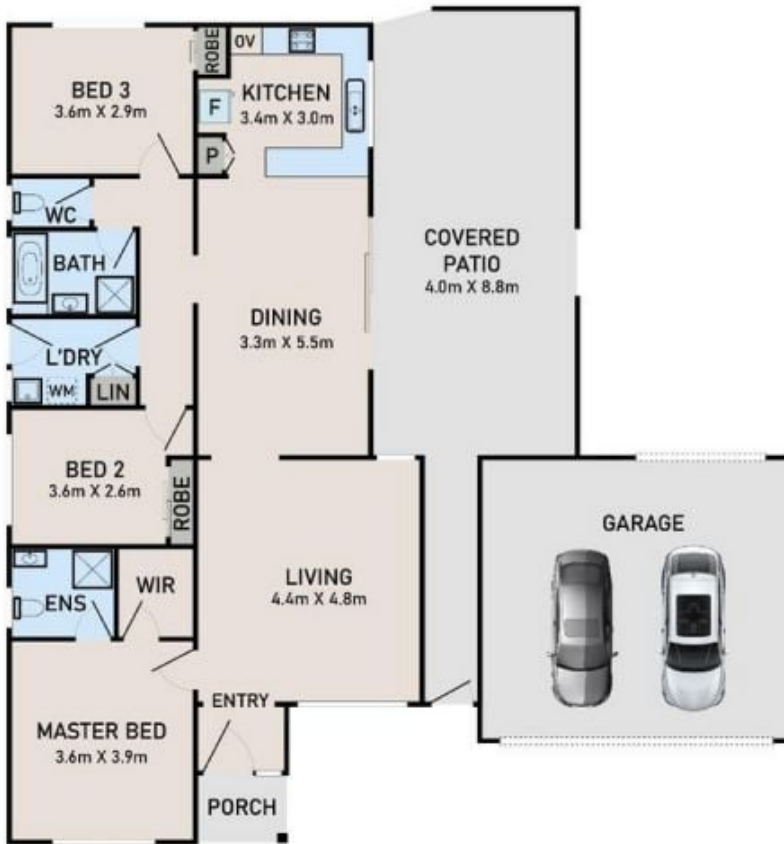


Hemant Dobriyal
0424 938 441

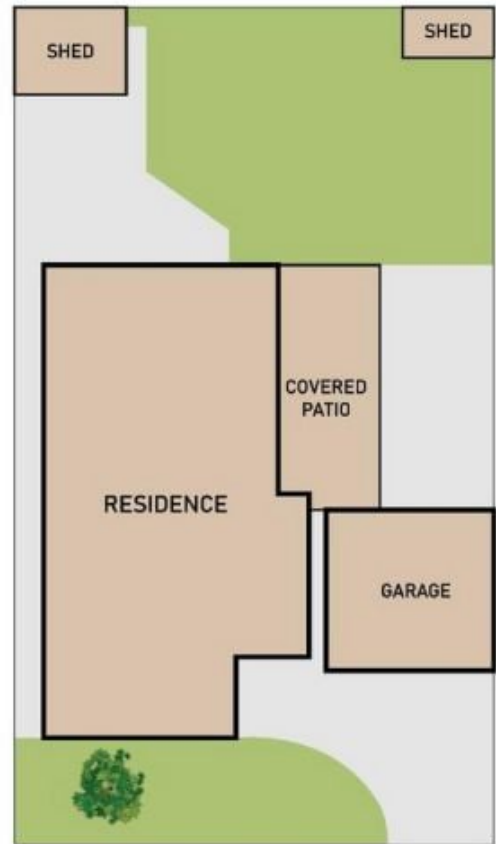


Pulkit Khetarpal
0413 500 090

FLOOR PLAN



SITE PLAN



15 MAHOGANY CLOSE, HAMPTON PARK

FLOOR AND SITE PLAN IS FOR ILLUSTRATIVE PURPOSES ONLY AND NOT TO SCALE. THE VENDOR, AGENCY OR SUPPLIER MAKE NO GUARANTEE, WARRANTY OR REPRESENTATION AS TO THE ACCURACY OF ANY INFORMATION CONTAINED HEREIN AND THE COMPLETENESS OF THE FLOOR PLANNED WILL ACCEPT NO LIABILITY FOR ITS ACCURACY. INTERESTED PARTIES ARE ADVISED TO MAKE THEIR OWN INDEPENDENT ENQUIRIES.

ypa

Produced by **LUXORA SHOOTS**