



## 45 Barber Drive Hoppers Crossing VIC

4 2 2

Perfectly positioned in a highly sought-after pocket of Hoppers Crossing, this well-appointed home offers the ideal blend of space, comfort, and convenience. Located just minutes from Pacific Werribee Shopping Centre and within easy walking distance to Cambridge Primary School, local childcare facilities, and public transport, everything you need is right at your doorstep.

**Price** : \$520 pw

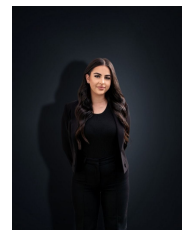
**View** : <https://www.ypa.com.au/8696828>

### Property Features:

- ? Four generously sized bedrooms, including a master retreat complete with walk-in robe and private ensuite
- ? Multiple living zones including a formal lounge, separate dining area, and a spacious rumpus/theatre room-perfect for family living and entertaining
- ? Well-equipped kitchen featuring an expansive island bench, stone benchtops, ample storage, and quality



**Ashley Gates**  
0424 267 675



**Stefanie Zahra**  
0406 871 722