



3 Elkhorn Way Point Cook VIC

4 2 4

YPA Point Cook proudly presents Welcome to 3 Elkhorn Way, Point Cook?a beautifully renovated double-storey residence that delivers the ultimate blend of luxury, space, and lifestyle in the highly sought-after Lincoln Heath Estate, perfectly positioned within the coveted Alamanda College zone.

Set on a generous 585m² (approx.) allotment and tucked away in a secure, quiet court location, this stunning home has been thoughtfully transformed into a private sanctuary, offering a resort-style living experience ideal for families who love to entertain.

From the moment you step inside, you're greeted by high ceilings, fresh interiors, premium engineered timber flooring on the ground floor, and plush new carpets upstairs?all complemented by an abundance of natural light and a

Price : Private Sale / \$1,495,000 - \$1,550,000
Land Size : 585 sqm
View : <https://www.ypa.com.au/8696501>

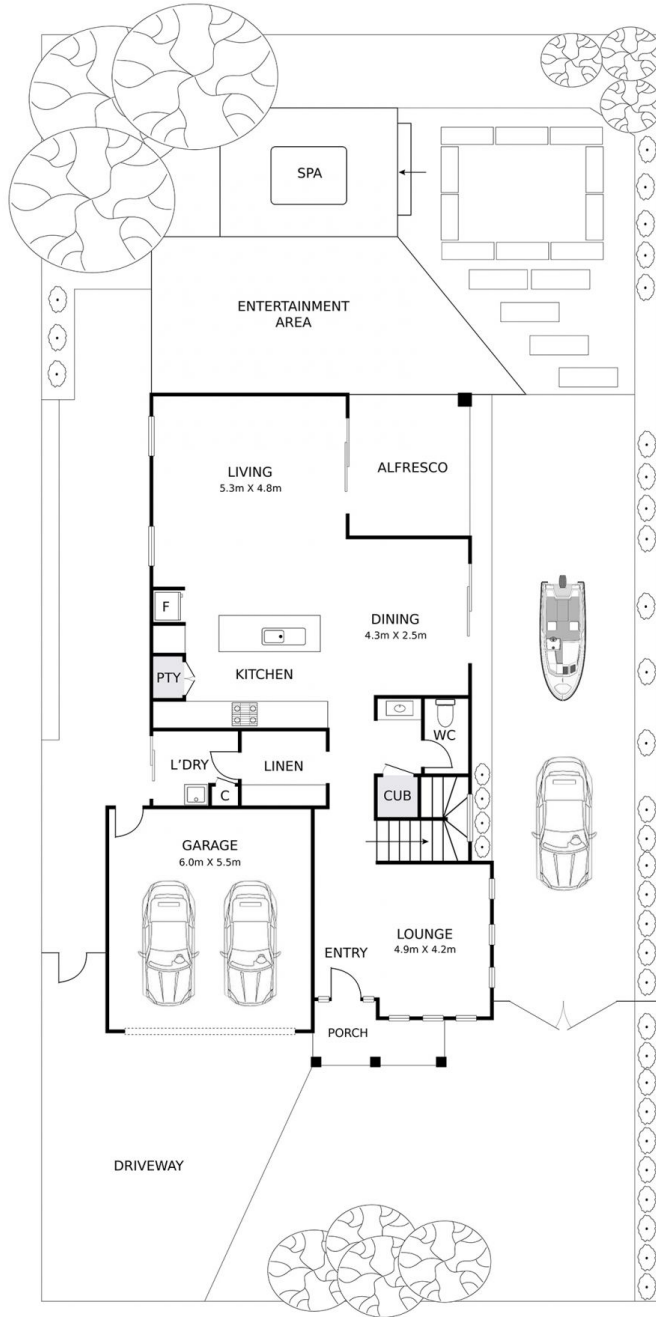


Pardeep Chahal
0431 595 725

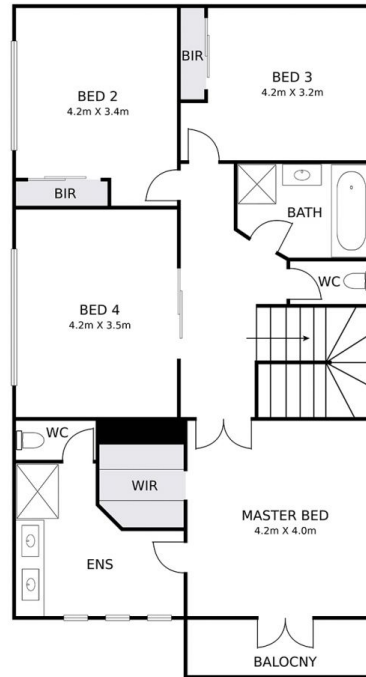


Nirav Gupta
0452 236 536

3 ELKHORN WAY, POINT COOK



GROUND FLOOR



FIRST FLOOR

FLOOR PLAN ON SITE PLAN

DISCLAIMER: THIS FLOOR PLAN IS A VISUAL GUIDE ONLY AND MAY CONTAIN INACCURACIES IN MEASUREMENTS, LAYOUT, ROOM NAMES OR FEATURES. NO WARRANTY IS GIVEN AS TO ITS ACCURACY. INTERESTED PARTIES MUST CONDUCT THEIR OWN DUE DILIGENCE.



3 ELKHORN WAY, POINT COOK



GROUND FLOOR

FIRST FLOOR

DISCLAIMER: THIS FLOOR PLAN IS A VISUAL GUIDE ONLY AND MAY CONTAIN INACCURACIES IN MEASUREMENTS, LAYOUT, ROOM NAMES OR FEATURES. NO WARRANTY IS GIVEN AS TO ITS ACCURACY. INTERESTED PARTIES MUST CONDUCT THEIR OWN DUE DILIGENCE.

