

4 Goolwa Road Point Cook VIC

5 2 2

Amit Chahal from YPA Point Cook proudly presents another Porter Davis masterpiece ? a true family showstopper nestled in the heart of the prestigious Saltwater Coast Estate. Positioned in a quiet street just moments from coastal surroundings, this exceptional home is perfectly suited for growing families, first home buyers, and astute investors seeking lifestyle, space, and quality.

From the striking east-facing façade, the home immediately captures attention with its elegant street presence, complemented by an exposed aggregate concrete driveway and low-maintenance artificial turf, creating a polished and modern first impression. Stepping inside, you are welcomed by soaring high ceilings and beautiful timber flooring, setting the tone for the quality that flows throughout. A thoughtfully positioned study area at the front provides the perfect space to work from home, while the

Price : East Facing \$980,000 - \$1,030,000
Land Size : 447 sqm
View : <https://www.ypa.com.au/8691938>

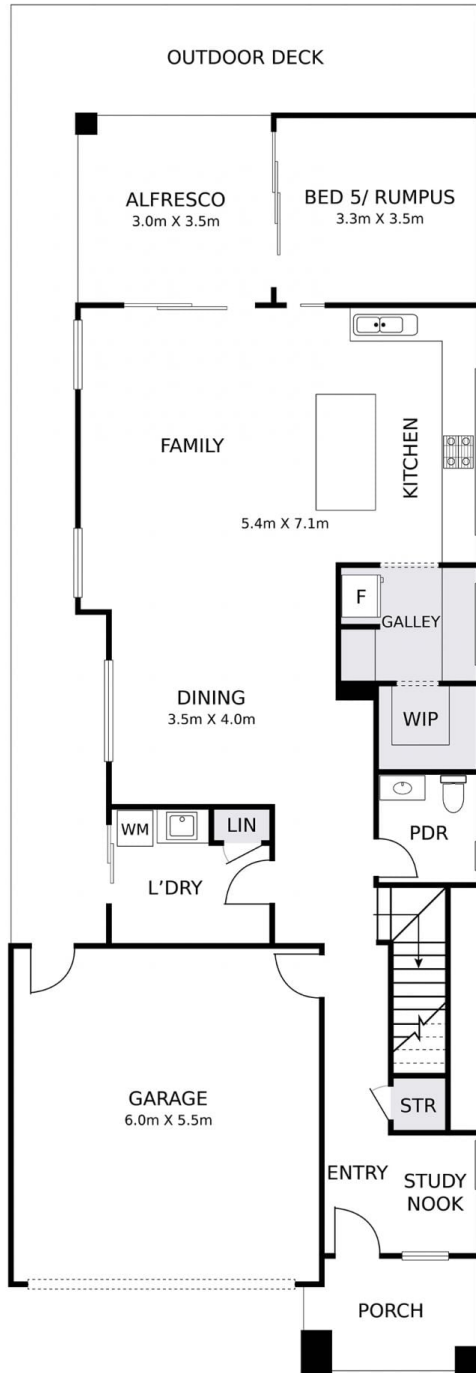


Amit Chahal
0437 779 139

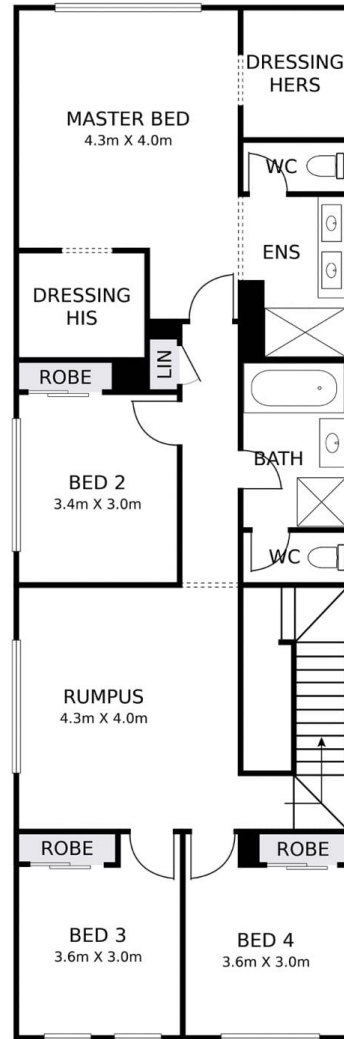


Pardeep Chahal
0431 595 725

4 GOOLWA ROAD, POINT COOK



GROUND FLOOR



FIRST FLOOR

DISCLAIMER: THIS FLOOR PLAN IS A VISUAL GUIDE ONLY AND MAY CONTAIN INACCURACIES IN MEASUREMENTS, LAYOUT, ROOM NAMES OR FEATURES. NO WARRANTY IS GIVEN AS TO ITS ACCURACY. INTERESTED PARTIES MUST CONDUCT THEIR OWN DUE DILIGENCE.

