

41 Hill Drive Pimpama QLD

3  2  2 

Positioned in the well-regarded Heights Estate, this solid 2015-built lowset home delivers the kind of flexibility and space that's increasingly hard to find at this price point in Southeast Queensland's fastest-growing corridor.

With three bedrooms plus a dedicated study, two bathrooms, two separate living areas, a single lock-up garage and additional driveway parking, this one ticks a lot of boxes for owner-occupiers and investors alike.

The Home

The floorplan flows well, with two distinct living zones giving the household room to breathe, a formal front lounge and a casual open-plan family and dining area connecting to the kitchen. The dedicated study is a genuine fourth space, not a converted alcove, ideal for those working from home or needing extra storage.

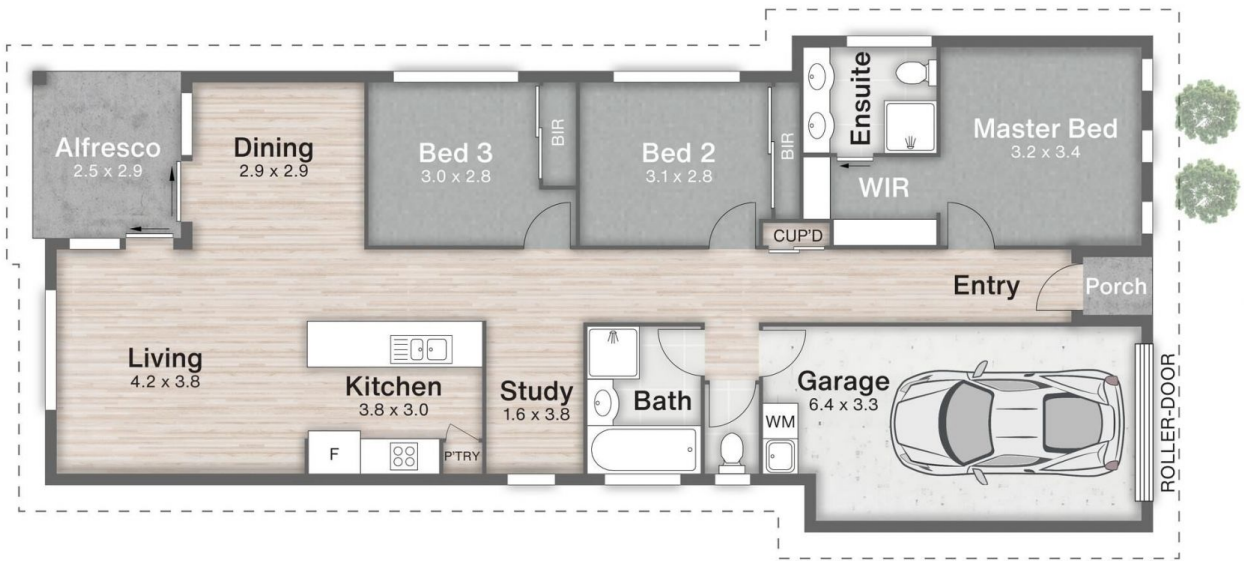
Price : GRAND OPENING WED 5:00pm
Building Size : 145 sqm
Land Size : 290 sqm
View : <https://www.ypa.com.au/8691427>



Steven Spiteri
0423 428 079



Sebastian Powell
0402 556 125



41 Hill Drive PIMPAMA

3 | 2 | 2 | 145m²

All dimensions are approximate; they are subject to errors and inaccuracies and no liability will be accepted. Plans are shown for marketing purposes only.

