



## 1 Serra Way Fraser Rise VIC

5 2 2

Discover an exceptional opportunity to secure a refined, custom-built family residence in one of Fraser Rise's most sought-after pockets. Beautifully appointed and thoughtfully designed, this impressive home showcases a seamless fusion of generous proportions, contemporary elegance, and everyday functionality. A versatile floorplan paired with effortless indoor-outdoor flow is enhanced by premium finishes throughout, delivering a home of undeniable style and substance.

### Property Highlights

? Expansive master retreat featuring a walk-in robe and a private ensuite with double vanity, floor-to-ceiling tiles, and a stone benchtop

? Four additional spacious bedrooms, ideal for growing or extended families (one currently configured as a fully functional hair salon-perfect for a home business)

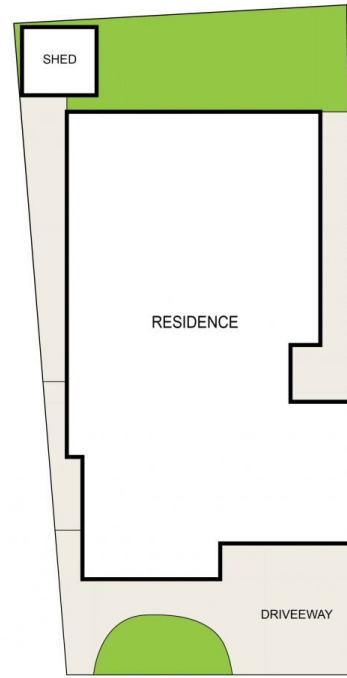
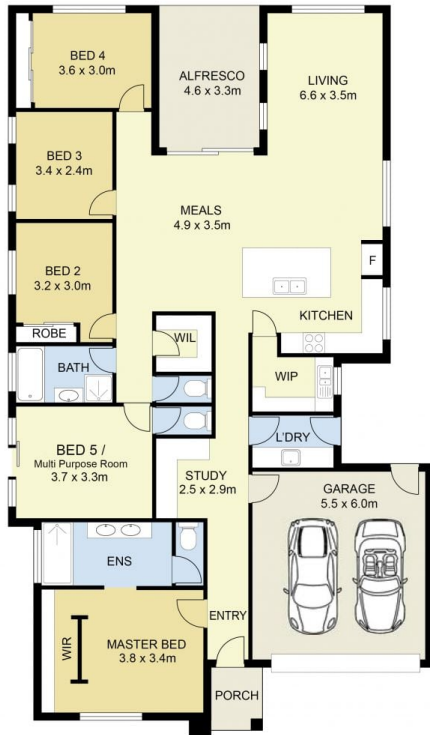
**Price** : PRIVATE SALE | \$879,000 - \$919,000  
**Land Size** : 481 sqm  
**View** : <https://www.ypa.com.au/8687396>



**Andrew Migliorisi**  
0432 526 844



**Ajet Jumeri**  
0450 940 041



SITE PLAN (NOT TO SCALE)



# 1 Serra Way, Fraser Rise

DISCLAIMER : ALL DIMENSIONS ARE AN APPROXIMATION ONLY AND NO GUARANTEE IS GIVEN WITH RESPECT TO ACCURACY.