

16 Slade Street Sunbury VIC

4 2 2

Set on approximately 400m² in the booming Kingsfield Estate, this stunning home delivers the perfect combination of style, neutral modern colour palette, space, and high-end finishes throughout.

Step inside and be immediately impressed by soaring high ceilings and a thoughtfully designed floorplan. The heart of the home is the open-plan kitchen, living, and dining area, filled with natural light from the expansive windows and complemented by a custom fitted wall unit for the TV.

The kitchen is truly a standout, showcasing exceptional attention to detail with stone waterfall benchtops, gas cooktop, oven, dishwasher, and a spacious walk-in pantry with additional cupboard storage. A beautifully fitted bar or coffee station adds a touch of luxury, while ample bench and cupboard space ensures both functionality and style.

Price : \$780,000 - \$835,000
Land Size : 400 sqm
View : <https://www.ypa.com.au/8687160>

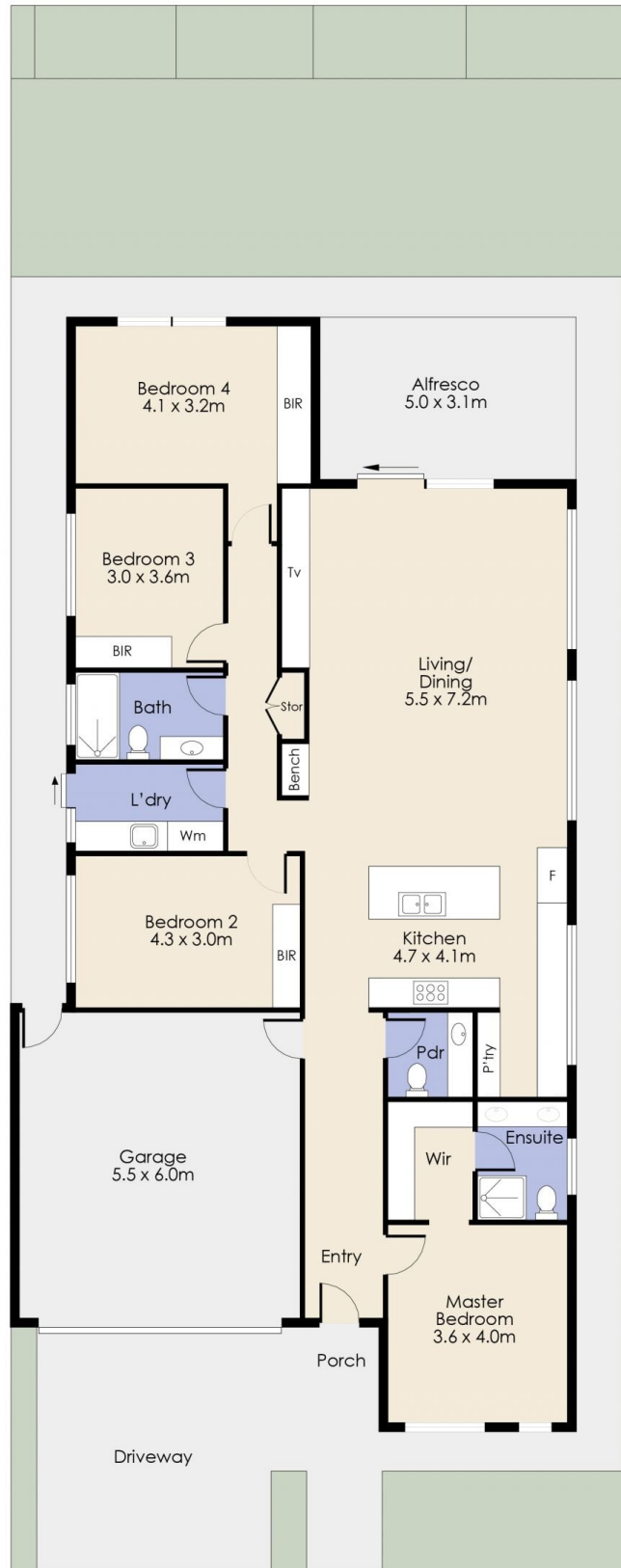


Lisa Totaro
0410 144 215



Cassandra Doria
0497 972 028

16 Slade Street, SUNBURY



Whilst every attempt has been made to ensure the accuracy of the floor plan contained here, measurements of doors, windows, rooms and any other item are approximate and no responsibility is taken for any error, omission, or mis-tatement. This plan is for illustrative purposes only and should be used as such by any prospective purchaser. The services, systems and appliances shown have not been tested and no guarantee as to their operability or efficiency can be given.