



29 Evesham Drive Point Cook VIC

4 2 2

Auction Location: On Site !!

Amit Chahal from YPA Point Cook proudly presents this exceptional east-facing residence at 29 Evesham Drive, Point Cook ? a beautifully crafted GJ Gardner home set on a massive 564m² (approx.) allotment. Positioned in a highly desirable pocket next to Sanctuary Lakes, this home offers an outstanding blend of modern design, functional living, and lifestyle appeal.

From the moment you arrive, the home impresses with its striking modern façade and welcoming street presence. Stepping inside, you are greeted by high ceilings and a grand entry enhanced with a stylish bulkhead feature, setting the tone for the quality throughout. A formal lounge at the front of the home provides the perfect space to entertain guests or enjoy quiet relaxation away from the

Price : East Facing \$845,000 - \$895,000
Land Size : 564 sqm
View : <https://www.ypa.com.au/8686109>

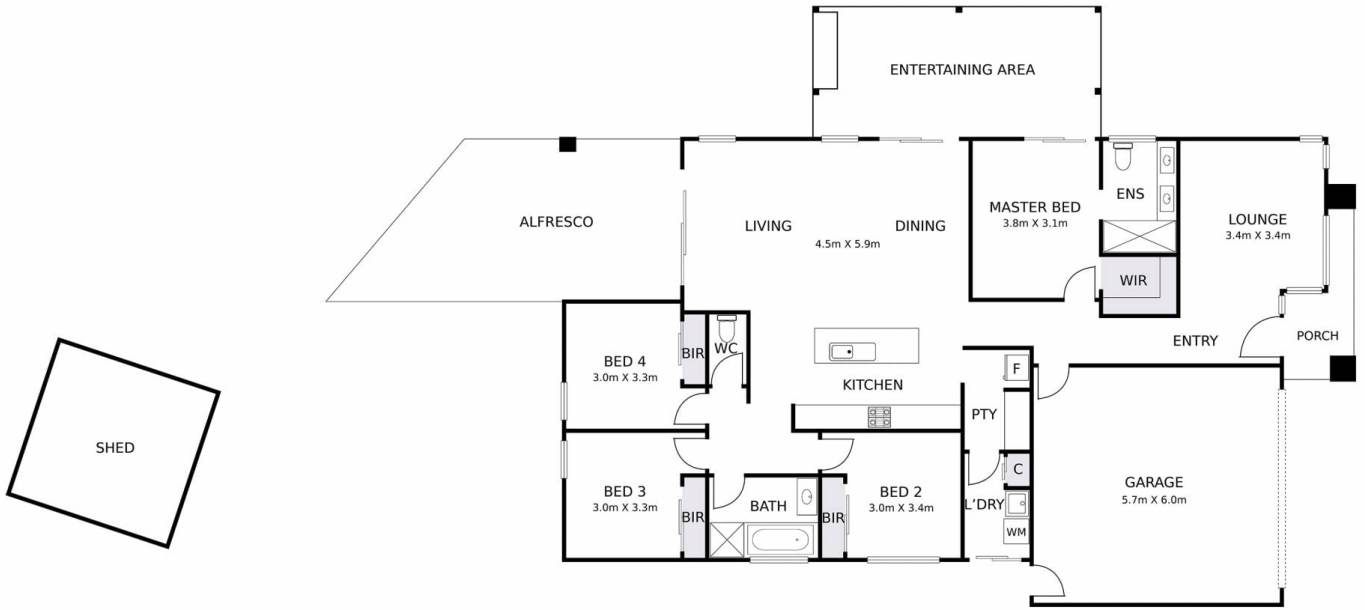


Amit Chahal
0437 779 139



Vishesh Lather
0470 618 967

29 EVESHAM DRIVE, POINT COOK



DISCLAIMER: THIS FLOOR PLAN IS A VISUAL GUIDE ONLY AND MAY CONTAIN INACCURACIES IN MEASUREMENTS, LAYOUT, ROOM NAMES OR FEATURES. NO WARRANTY IS GIVEN AS TO ITS ACCURACY. INTERESTED PARTIES MUST CONDUCT THEIR OWN DUE DILIGENCE.

ypa