



50 Jamieson Terrace Taylors Hill VIC

4 2 2

This exceptional residence is superbly positioned in one of Taylors Hill's most tightly held and sought-after pockets. Set on an expansive 667m² (approx.) allotment, this beautifully maintained family home delivers the perfect balance of space, practicality and lifestyle. Thoughtfully designed for growing families, the versatile floorplan showcases multiple living zones, generous accommodation and seamless indoor-outdoor integration-creating a home that is both functional and inviting.

Price : PRIVATE SALE | \$849,000 - \$899,000
Land Size : 667 sqm
View : <https://www.ypa.com.au/8685271>

Property Highlights

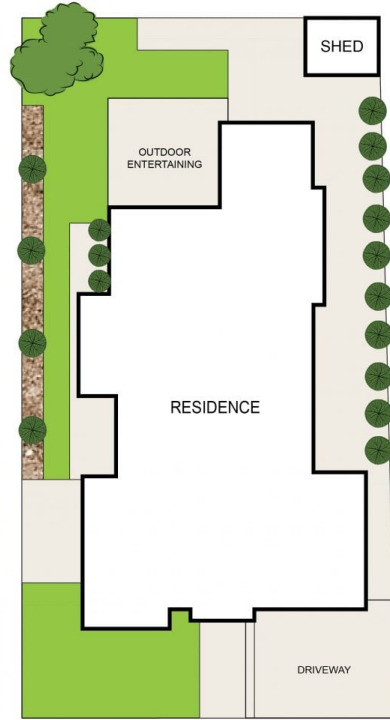
- ? Expansive master retreat complete with walk-in robe and private ensuite
- ? Three additional spacious bedrooms with built-in wardrobes, ideal for large or extended families
- ? Elegant formal lounge and dining or home office, positioned at the front of the home - perfect for entertaining



Andrew Migliorisi
0432 526 844



Ajet Jumeri
0450 940 041



SITE PLAN
(NOT TO SCALE)



50 Jamieson Terrace, Taylors Hill

DISCLAIMER : ALL DIMENSIONS ARE AN APPROXIMATION ONLY AND NO GUARANTEE IS GIVEN WITH RESPECT TO ACCURACY.