



9 Athena Road WEIR VIEWS VIC

4  2  2 

Positioned perfectly in between the brand new Primary School and Opalia Shopping Plaza, this near new upgraded family home as a lot to offer! Not only are you close to the Shopping centre and Primary School, you are still located close to plenty of walking tracks, playgrounds, schools, public transport and the Melton Train Station!

From the moment you arrive, the home's striking façade and professionally landscaped front garden make a lasting impression. The inviting porch and grand front entrance, setting the tone for the quality you'll find throughout. Inside, soaring 9-foot ceilings and a thoughtfully designed floorplan enhance the home's spacious feel. Every element has been carefully considered, from the elegant sheer blinds and upgraded finishes to the stylish stone benchtops and lush gardens at both the front and rear.

The master bedroom is located at the front of the property and is complete with a large walk-in wardrobe, and a

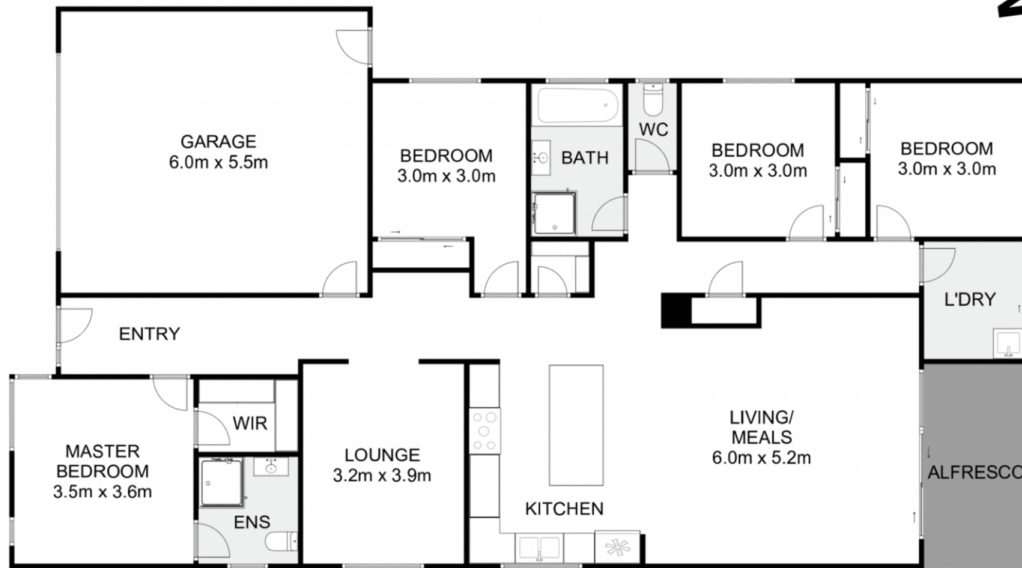
Price : \$689,000- \$745,000
Land Size : 350 sqm
View : <https://www.ypa.com.au/8683596>



Ryan Anders
0434 900 300



Cheyenne Kollar
0484 385 522



9 Athena Road, Weir Views

Whilst every attempt has been made to ensure the accuracy of the floor plan contained here, measurements of doors, windows, rooms and any other items are approximate and no responsibility is taken for any error, omission, or mis-statement. This plan is for illustrative purposes only and should be used as such by any prospective purchaser. The services, systems and appliances shown have not been tested and no guarantee as to their operability or efficiency can be given.

