



2/307 Eastbourne Road Capel Sound VIC

3  2  2 

Positioned just 850m from the sparkling foreshore and picturesque bay trail, this stylish three-bedroom townhouse delivers an effortless blend of comfort, convenience, and coastal charm. Ideally suited to first-home buyers, downsizers, and investors, it offers a relaxed lifestyle in a highly sought-after Rosebud pocket.

Enjoy the ease of having everything at your fingertips - only moments from Rosebud Plaza, Rosebud Secondary College, and the popular YAWA Aquatic Centre, along with local cafés, parks, and everyday amenities.

Inside, the home is bathed in natural light, enhanced by its desirable north-facing orientation. The thoughtfully designed layout, showcases modern finishes and a seamless indoor-outdoor connection, creating a warm and inviting atmosphere throughout.

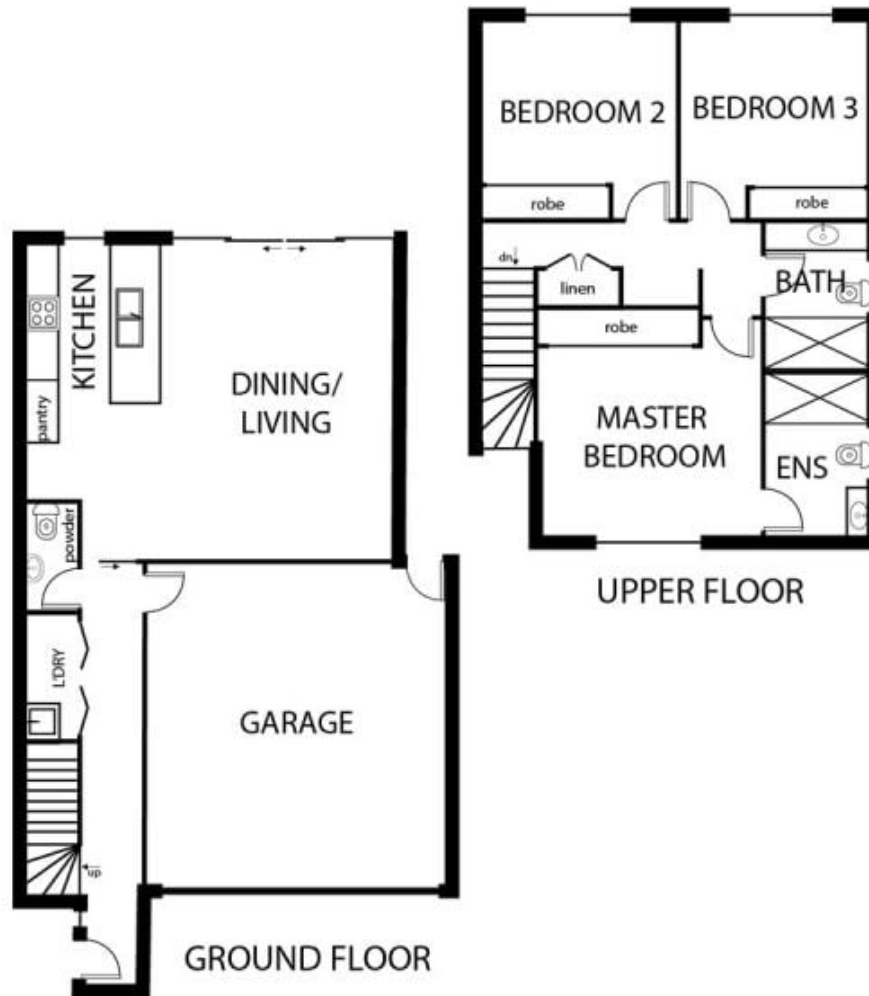
Price : \$660,000 - \$700,000
Land Size : 136 sqm
View : <https://www.ypa.com.au/8674319>



Tracey Hedin
0407 429 696



Nancy Crupi
0413 969 284



2/307 Eastbourne Road, Capel Sound

This floorplan is for illustration purposes only and no warranty is given to its accuracy. Buyers are advised to conduct their own due diligence.