



6 Derwin Street Rye VIC

4 2 3

Privately positioned in a tranquil, low-traffic street, this beautifully refreshed home enjoys a leafy, elevated setting just a short stroll from Rye's stunning coastline and lively village precinct. Designed to embrace relaxed coastal living, it delivers a perfect balance of seclusion, character and everyday ease, with inviting outdoor zones that encourage year-round enjoyment.

Occupying a substantial allotment of approximately 634sqm with a wide street presence, the residence is filled with natural light and offers a welcoming open-plan layout ready to be enjoyed. At its heart, a sleek galley style kitchen connects effortlessly to the generous living and dining domain, where a cosy wood fire and reverse-cycle heating and cooling ensure comfort in every season.

A charming façade sets the tone on arrival, while a full

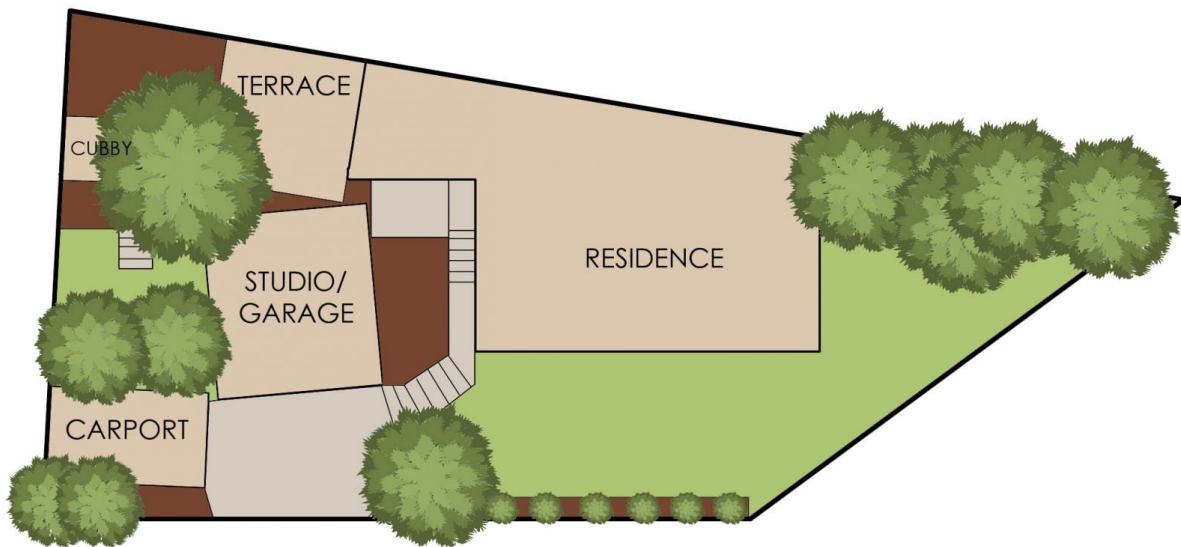
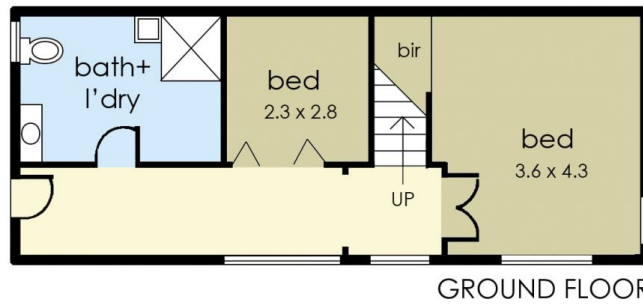
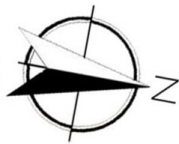
Price : \$850,000 - \$895,000
Land Size : 634 sqm
View : <https://www.ypa.com.au/8674163>



Katrina Talarico
0420 778 404



Ben Nutbean
0413 125 996



6 Derwin Street, Rye

The floor plan is provided for general information and illustrative purposes only. All measurements, dimensions, and layouts are approximate and may vary from the actual property. While every effort has been made to ensure accuracy, no responsibility is taken for any error, omission, or misstatement. Prospective buyers should not rely solely on the floor plan and are encouraged to conduct their own inspections and verify all details independently. The design and content of this floor plan remain the property of DND Floor Plans. ©