



## 25 Kangaroo Road Greendale VIC

5 🚗 2 🚗 4 🚗

Set in the picturesque pocket of Greendale, this perfect country lifestyle estate offers the ideal balance of peaceful living and convenience, located just 50 minutes from Melbourne and only 30 minutes to Ballarat- making for an easy and convenient commute.

**Price** : \$1,289,000 - \$1,389,000  
**Land Size** : 2.5 Acres  
**View** : <https://www.ypa.com.au/8674125>

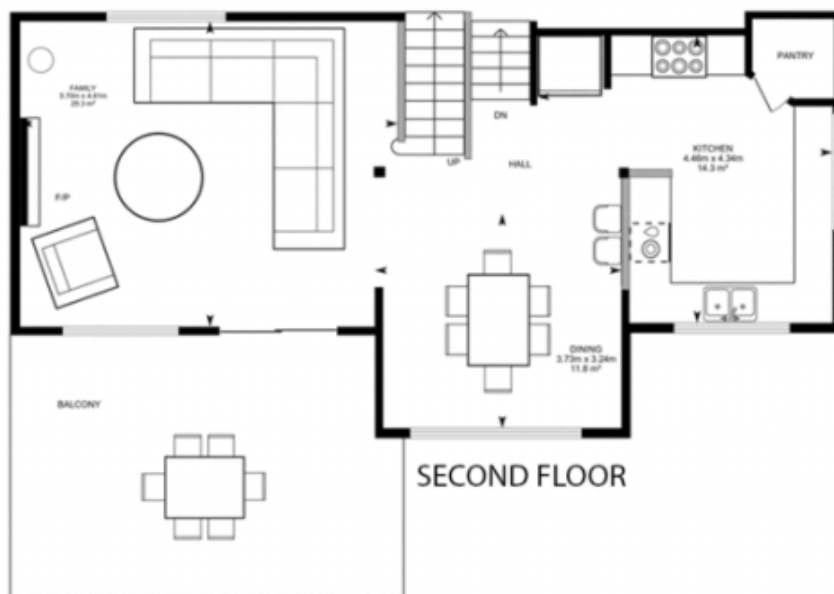
Positioned on approximately 2.5 acres, this custom-designed home is perfectly suited to families seeking space, comfort, and tranquillity. The home comprises four generous bedrooms with built-in robes, with three bedrooms thoughtfully positioned on a separate level, serviced by a central bathroom and separate toilet. The expansive master suite is a true retreat, featuring soaring ceilings, a walk-in robe, ensuite, split system and an additional sitting area.



**Jodi Nash**  
0419 342 120

Designed for both relaxation and entertaining, the home





## 25 Kangaroo Road, Greendale

Whilst every attempt has been made to ensure the accuracy of the floor plan contained here, measurements of doors, windows, rooms and any other items are approximate and no responsibility is taken for any error, omission, or mis-statement. This plan is for illustrative purposes only and should be used as such by any prospective purchaser. The services, systems and appliances shown have not been tested and no guarantee as to their operability or efficiency can be given.