



23 Timmins Crescent Rye VIC

2 2 1

Perfectly positioned just moments from the golden sands and vibrant heart of Rye Village, this original beach house presents an exceptional opportunity to secure a prime slice of the Mornington Peninsula with fantastic potential.

Set on a 952m² (approx.) allotment with an ideal east-west orientation, the property enjoys sun-drenched mornings and glowing coastal sunsets - an enviable foundation for your dream seaside lifestyle.

The existing two bedroom, two bathroom home offers a classic beach shack footprint, ready for those with vision to restore, reimagine or completely transform. Whether you're considering a full scale renovation or a luxury knock-down rebuild (STCA), the expansive block size and dual access via Timmins Crescent and rear entry from Dunlane Court South, opens the door to a range of exciting possibilities.

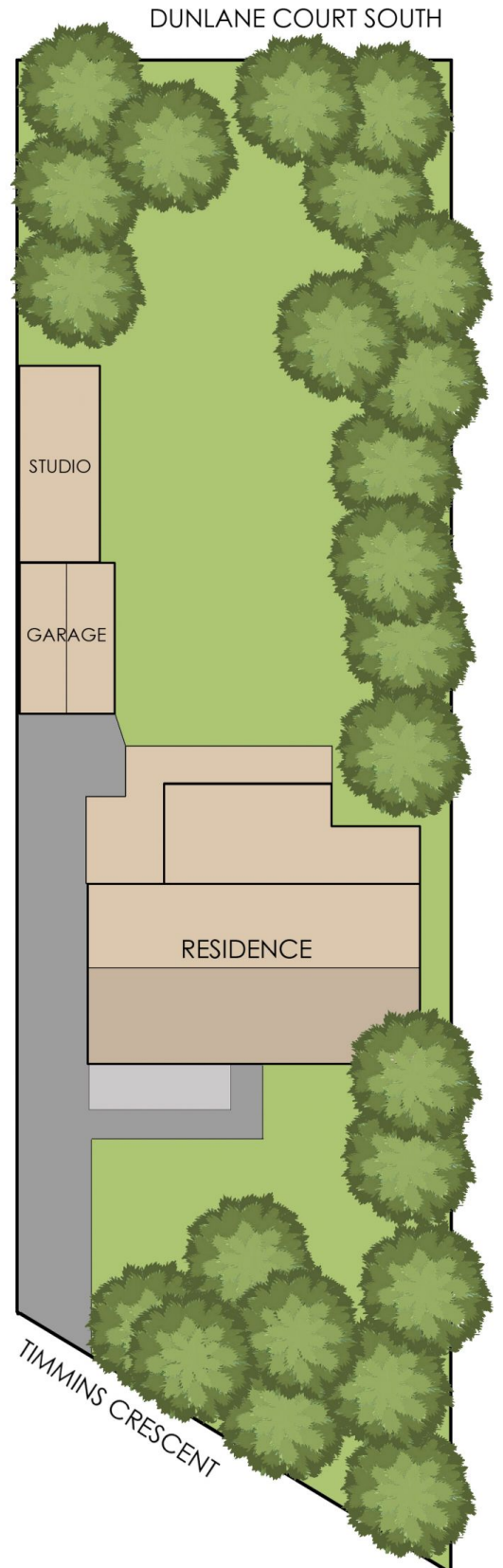
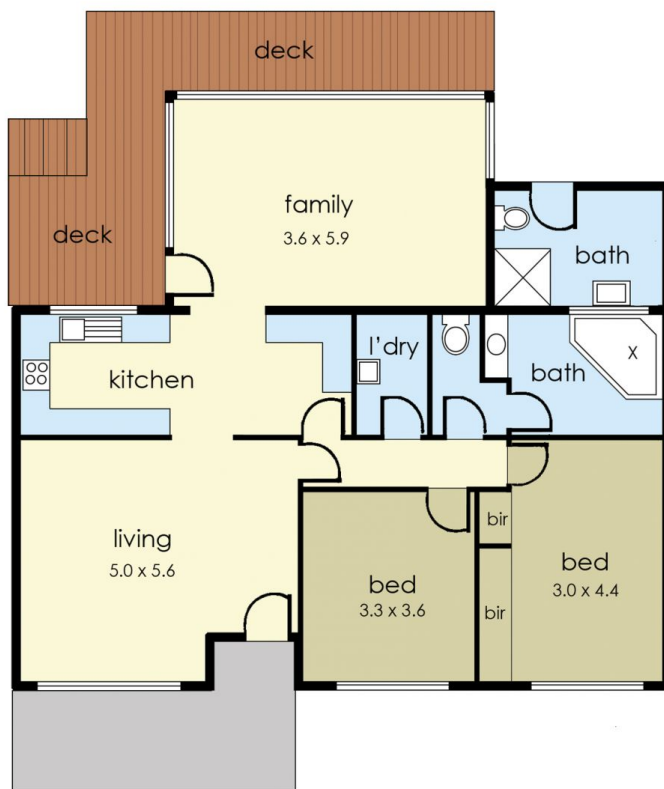
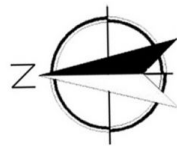
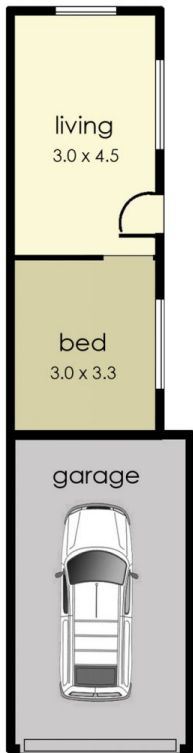
Price : \$ 700,000
Land Size : 952 sqm
View : <https://www.ypa.com.au/8668417>



Ben Nutbean
0413 125 996



Katrina Talarico
0420 778 404



23 Timmins Crescent, Rye

The floor plan is provided for general information and illustrative purposes only. All measurements, dimensions, and layouts are approximate and may vary from the actual property. While every effort has been made to ensure accuracy, no responsibility is taken for any error, omission, or misstatement. Prospective buyers should not rely solely on the floor plan and are encouraged to conduct their own inspections and verify all details independently. The design and content of this floor plan remain the property of DND Floor Plans. ©