



29 Andrew Street Melton South VIC

3 2 2

Situated in an ideal location of Melton South, this home sits in close proximity to Melton Train Station, Station Square Shopping Centre, an abundance of primary and secondary schools, easy access to Western Freeway and so much more! Whether you're an investor, first home buyer or looking for your next opportunity this home suits all!

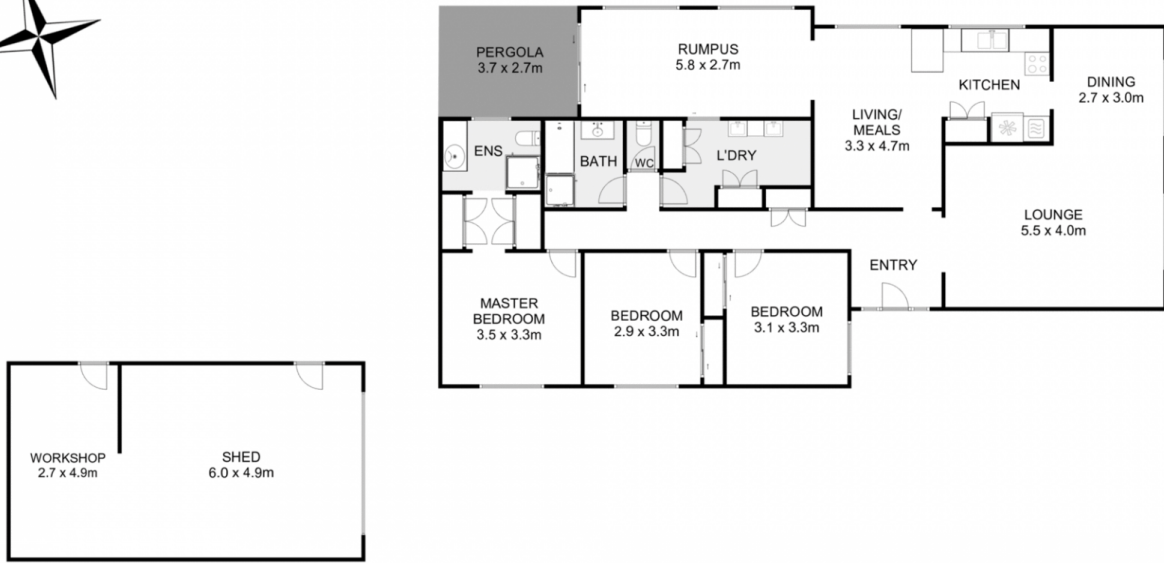
As you walk up to the front of the home you will be impressed by the landscaped front gardens and easy side access to the two-car shed down the side of the home. Walking up to the front door, the decked front porch offers a place to enjoy quiet morning coffee or to overlook the front yard.

Walking into the home you will first be met with a large lounge area, with plenty of space on offer to also utilise as a separate study space should you need to. The area

Price : \$ 600,000
Land Size : 585 sqm
View : <https://www.ypa.com.au/8658521>



Ricky Frew
0402 007 100



29 Andrew Street, Melton South

Whilst every attempt has been made to ensure the accuracy of the floor plan contained here, measurements of doors, windows, rooms and any other items are approximate and no responsibility is taken for any error, omission, or mis-statement. This plan is for illustrative purposes only and should be used as such by any prospective purchaser. The services, systems and appliances shown have not been tested and no guarantee as to their operability or efficiency can be given.

