



60 Wondaree Street Rye VIC

3 2 1

Set in a convenient position between the bay and the beach, 60 Wondaree Street presents a refined coastal residence defined by light, considered design, and an effortless sense of ease.

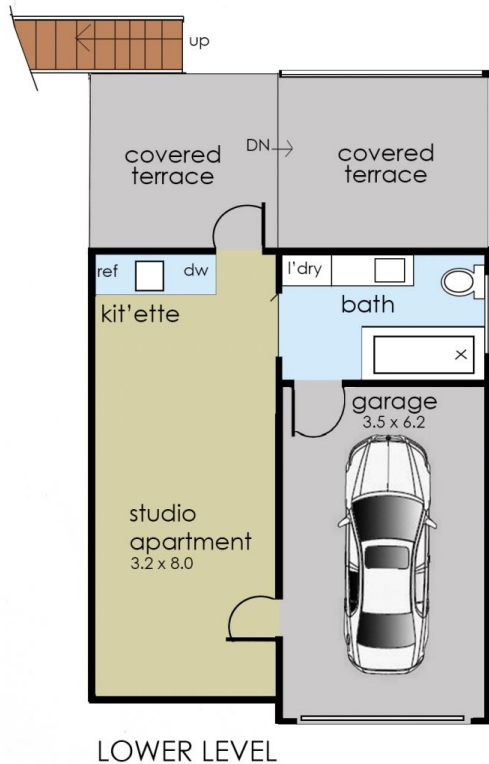
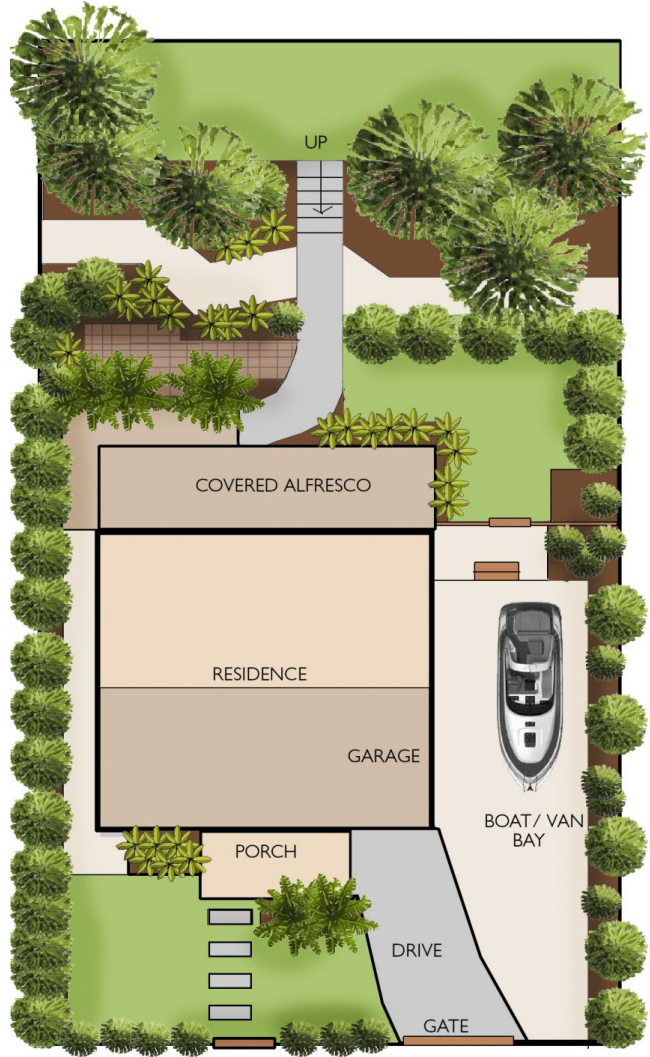
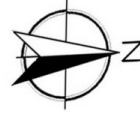
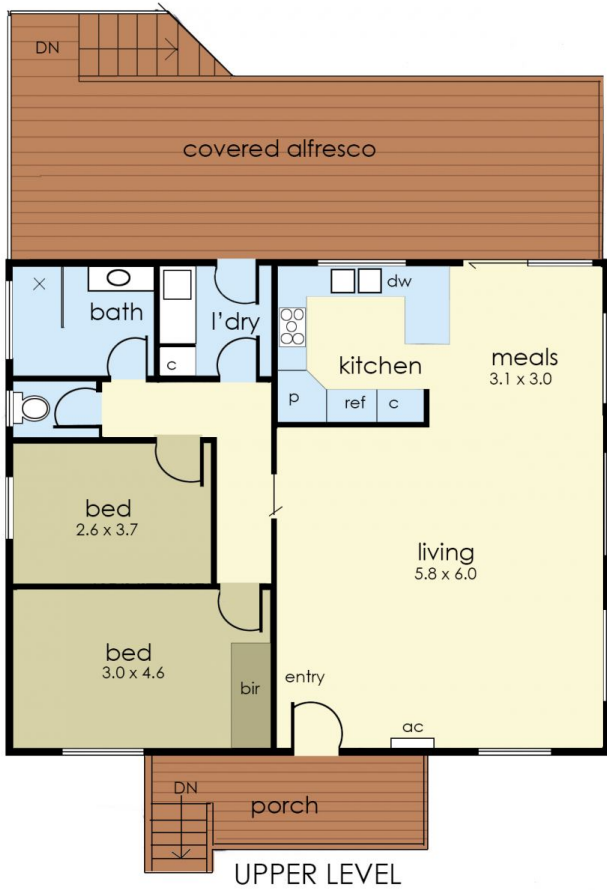
The upper level forms the heart of the home, where a beautifully proportioned living area is framed by a soaring vaulted ceiling and filled with sunshine throughout the day. The space feels both expansive and welcoming, enhanced by a ceiling fan, split system heating and cooling, and elegant white plantation shutters that introduce softness and privacy. From here, the living zone extends seamlessly to a covered balcony, creating an inviting setting for relaxed entertaining or quiet moments at the end of the day.

The layout has been thoughtfully resolved, incorporating a separate toilet, a tastefully renovated bathroom with a

Price : \$900,000 - \$990,000
Land Size : 618 sqm
View : <https://www.ypa.com.au/8655906>



Jade Springer
0437 410 791



60 Wondaree Street, Rye

The floor plan is provided for general information and illustrative purposes only. All measurements, dimensions, and layouts are approximate and may vary from the actual property. While every effort has been made to ensure accuracy, no responsibility is taken for any error, omission, or misstatement. Prospective buyers should not rely solely on the floor plan and are encouraged to conduct their own inspections and verify all details independently. The design and content of this floor plan remain the property of DND Floor Plans. ©