

2 Broadleaf Boulevard Aintree VIC

3  2  2 

Here's your chance to secure a beautifully crafted, brand-new home in the highly respected and fast-growing Woodlea Estate in Aintree. Whether you're a first home buyer, downsizer, or savvy investor, this exceptional opportunity offers the perfect blend of modern living, smart design and long-term potential. Positioned in a vibrant, master planned community, you'll enjoy immediate access to stunning parklands, tranquil wetlands, scenic walking trails, quality schools, local shops, public transport and an exciting array of new amenities just around the corner.

Property Highlights:

? Luxurious master suite featuring a walk-in robe and a stylish ensuite with stone benchtop, double vanity and premium fittings

? Two additional spacious bedrooms, each with built-in wardrobes

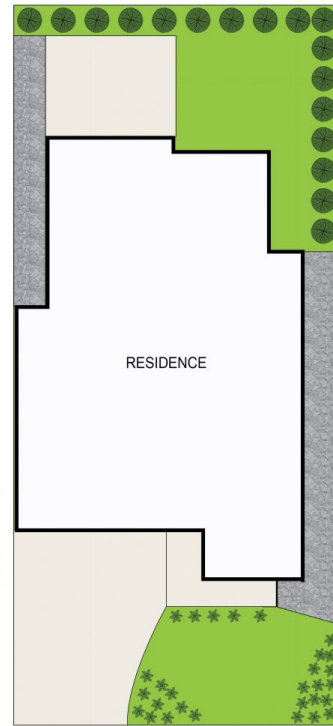
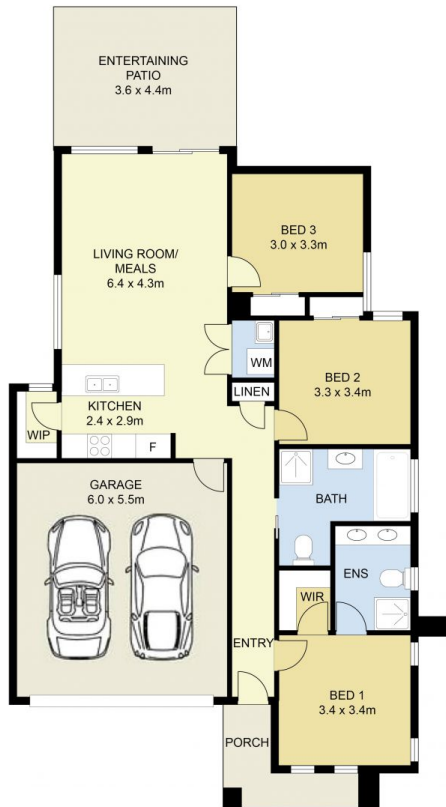
Price : PRIVATE SALE | \$649,000 - \$689,000
Land Size : 370 sqm
View : <https://www.ypa.com.au/8655772>



Andrew Migliorisi
0432 526 844



Ajet Jumeri
0450 940 041



SITE PLAN (NOT TO SCALE)



2 Broadleaf Boulevard, Aintree

DISCLAIMER : ALL DIMENSIONS ARE AN APPROXIMATION ONLY AND NO GUARANTEE IS GIVEN WITH RESPECT TO ACCURACY.