



1/25 Salzburg Road Pimpama QLD

3  2  2 

Auction Location: ON SITE

Modern single-level duplex in the heart of Salzburg Mews Estate, walk to shops and the new Pimpama Train Station.

Perfectly positioned in the sought-after Salzburg Mews Estate, this beautifully presented 3-bedroom, 2-bathroom single-level duplex combines low-maintenance living with unbeatable convenience. Currently tenanted and generating reliable rental income, this is a turnkey investment opportunity for savvy buyers looking to secure a quality asset in a prime growth corridor that has experienced 12.9% capital growth over the past 12 months.

Basking in abundant natural light and enriched by warm, contemporary textures, this immaculately presented residence captures unique low-maintenance living across a

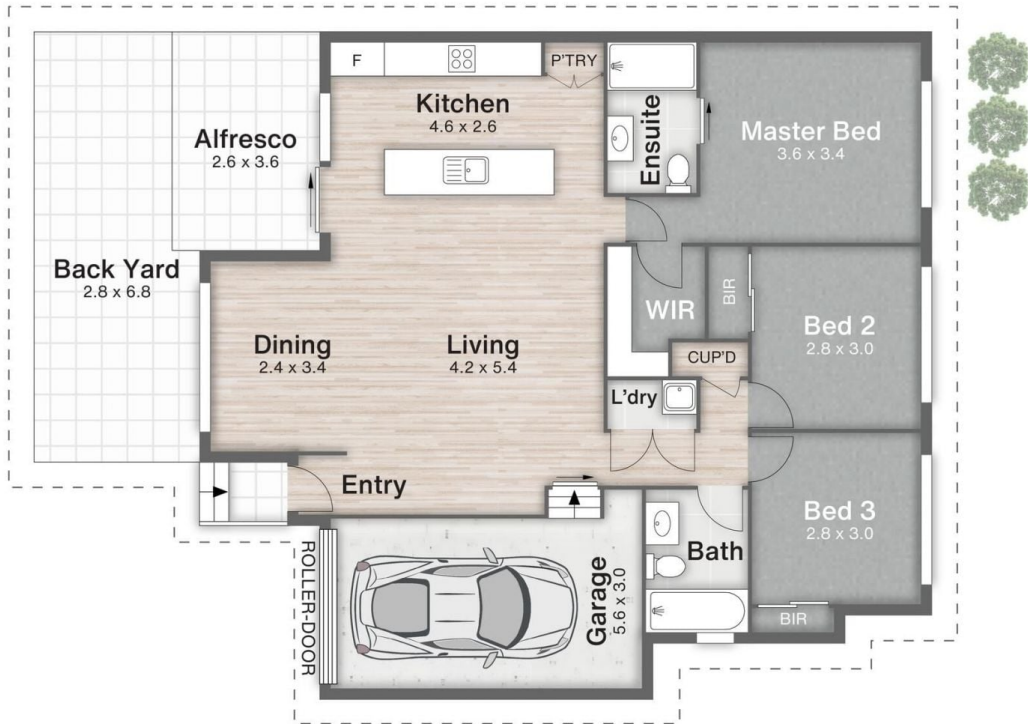
Price : Calling All Investors - Enquire Now!
Land Size : 306 sqm
View : <https://www.ypa.com.au/8651955>



Steven Spiteri
0423 428 079



Sebastian Powell
0402 556 125



1/25 Salzburg Road PIMPAMA

3 | 2 | 1 | 147m²

All dimensions are approximate; they are subject to errors and inaccuracies and no liability will be accepted. Plans are shown for marketing purposes only.

