

153 Werribee Street North Werribee VIC

3  **2**  **4** 

Perfectly blending timeless Hamptons charm with modern family living, this fully renovated residence delivers an exceptional opportunity within walking distance to Werribee CBD, Train Station, Schools, Walking tracks, Shops and Parks.

Quality Appointments include;
? Sheer Curtains & Blockout Motorised blinds
? Ducted heating and refrigerated cooling
? Sensor lighting throughout
? Security System, CCTV, Video Intercom

From the moment you arrive, the Hamptons-style façade and tiled front porch featuring Verona Artisan tiles set the tone for the quality and attention to detail found throughout. Step inside and be instantly impressed by the high ceilings, elegant finishes and warm timber floorboards, creating a

Price : \$ 967,000
Land Size : 676 sqm
View : <https://www.ypa.com.au/8650603>

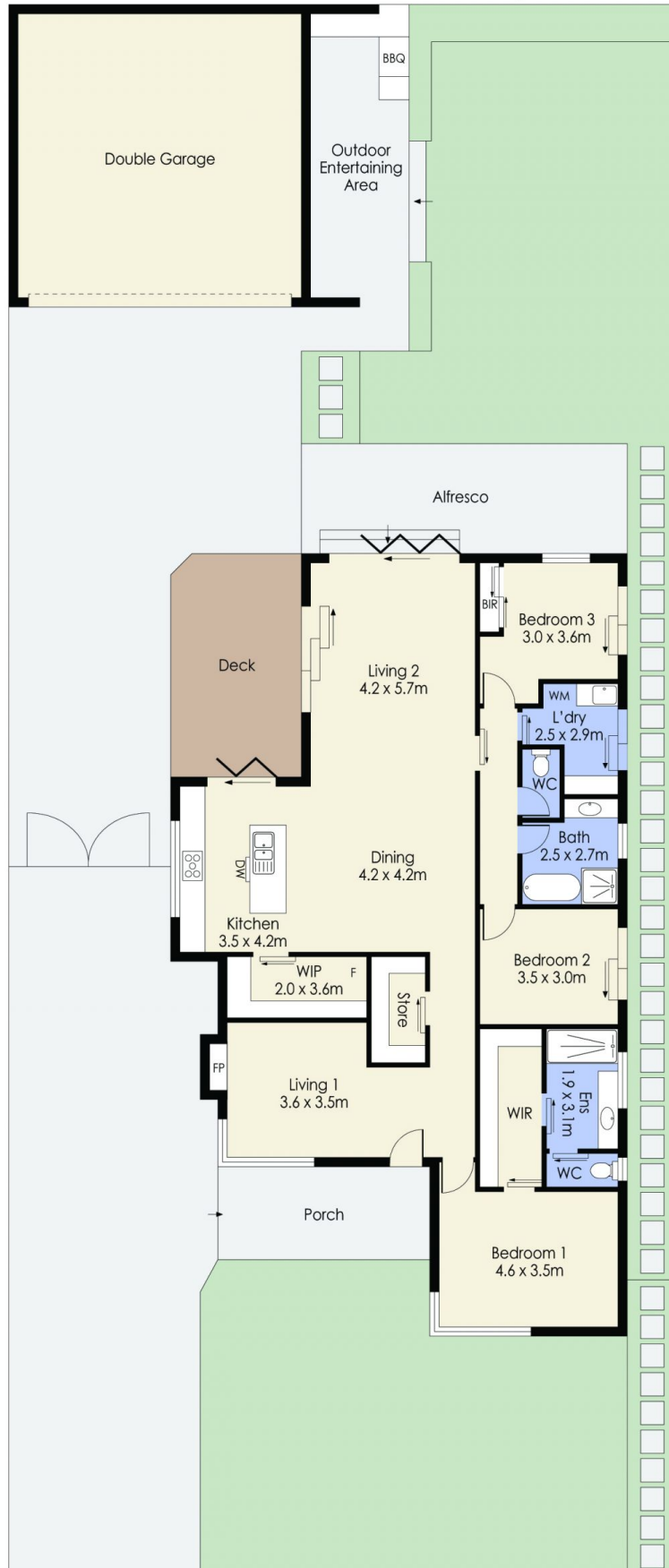


Mitch Smit
0450 913 513



Dane Bouch
0499 655 382

153 Werribee Street North, WERRIBEE



Whilst every attempt has been made to ensure the accuracy of the floor plan contained here, measurements of doors, windows, rooms and any other items are approximate and no responsibility is taken for any error, omission, or mis-statement. This plan is for illustrative purposes only and should be used as such by any prospective purchaser. The services, systems and appliances shown have not been tested and no guarantee as to their operability or efficiency can be given.