



12 Yoorala Road Rye VIC

3 1 5

There are homes that simply exist, and then there are homes that quietly shape a lifestyle. Tucked into the gentle rise of one of the Peninsula's most beloved seaside communities, this beautifully reimagined residence is the latter. Just moments from the calm turquoise waters of Port Phillip Bay, and within easy reach of the village atmosphere of Rye, this beautiful southern peninsula home captures everything people dream about when they imagine life on the coast.

Fully transformed for modern comfort, the home offers three bedrooms, two toilets and light-filled interiors framed by new aluminium windows, durable floorboards, and plantation timber shutters. Designed to make everyday living and hosting wonderfully easy, the stylish and elegantly appointed kitchen features Caesarstone benchtops, a large pantry, and a variety of quality

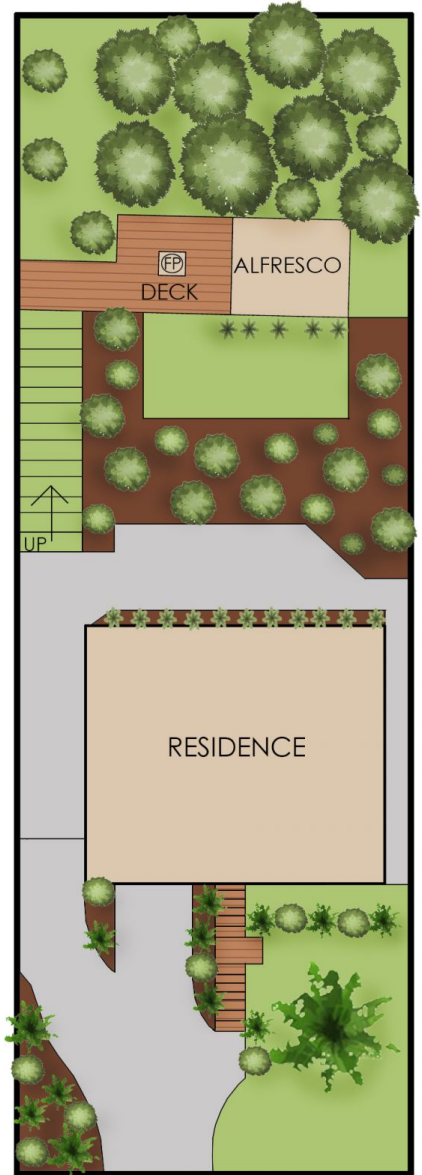
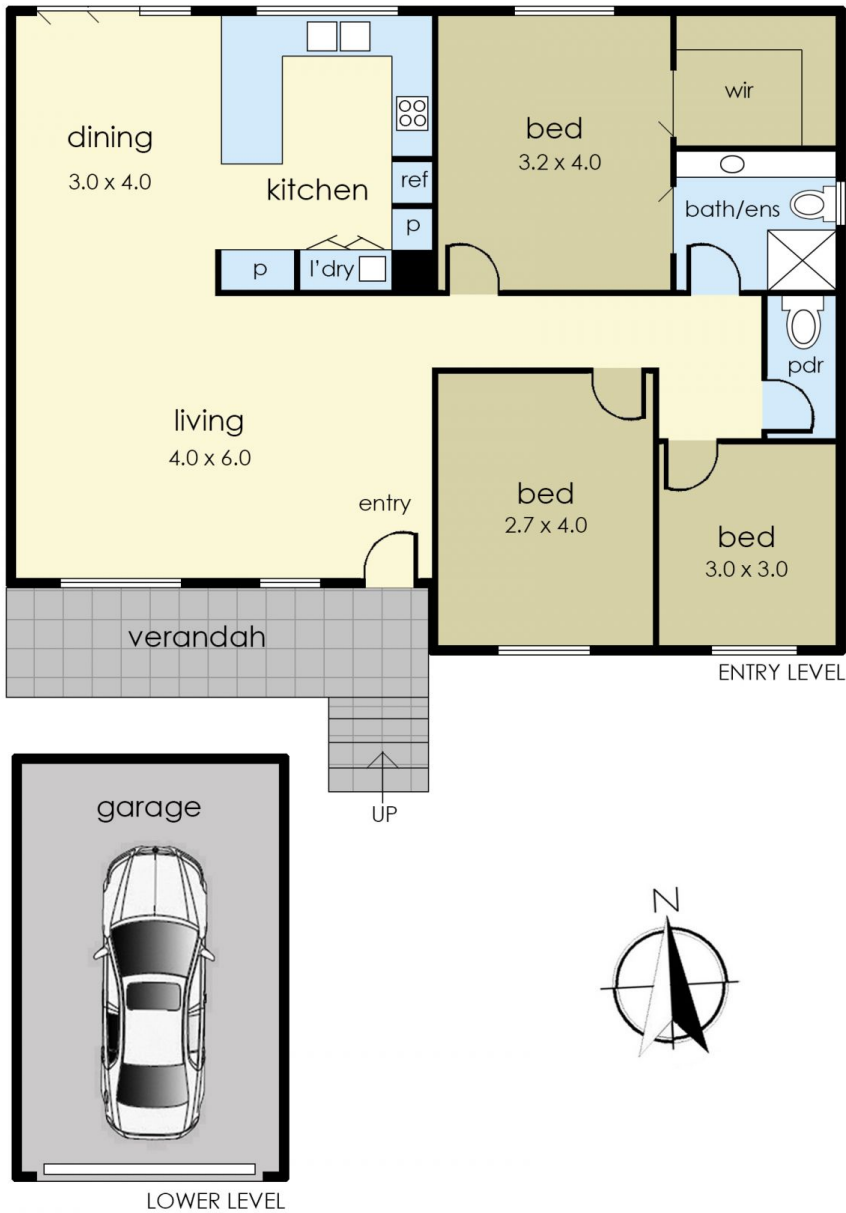
Price : \$950,000 - \$995,000
Land Size : 836 sqm
View : <https://www.ypa.com.au/8645782>



Katrina Talarico
0420 778 404



Ben Nutbean
0413 125 996



12 Yoorala Road, Rye

The floor plan is provided for general information and illustrative purposes only. All measurements, dimensions, and layouts are approximate and may vary from the actual property. While every effort has been made to ensure accuracy, no responsibility is taken for any error, omission, or misstatement. Prospective buyers should not rely solely on the floor plan and are encouraged to conduct their own inspections and verify all details independently. The design and content of this floor plan remain the property of DND Floor Plans. ©