



44 Observation Drive Rye VIC

5 3 2

Positioned in a peaceful elevated setting in Rye, this impressive tri-level family home delivers outstanding space, privacy, and versatility, complemented by leafy treetop views and multiple undercover entertaining zones.

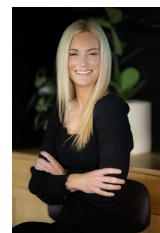
Designed for growing families and effortless entertaining, the home offers five generous bedrooms (three with built in robes & two with walk in robes), three bathrooms, and three expansive living areas spread across its large floor plan. Polished Victorian Ash hardwood timber floors flow throughout the interiors, enhancing the warmth and quality of the home, whilst the king-sized primary suite provides a private retreat with walk-in robe and ensuite. The main bathroom features a relaxing spa complete with head rests and pressure jets.

Entertaining is a standout feature, with a huge lower-level

Price : \$ 1,287,500
Land Size : 766 sqm
View : <https://www.ypa.com.au/8644981>



Ben Nutbean
0413 125 996



Katrina Talarico
0420 778 404

