



7 Parkfield Walk WESTMEADOWS VIC

3  2  2 

- Three generous bedrooms
- Master with full ensuite
- Living space downstairs with a gorgeous kitchen
- Open plan living
- Powder room and laundry
- Outside there's still plenty of room for entertaining (on a great looking decked area)
- Double remote garage with laneway access from behind
- Inclusions timber flooring, SST appliances, ducted heating and much more
- Close proximity to local amenities, Tullamarine Freeway, public transport and much more!
- Please bring photo ID to all open inspections!

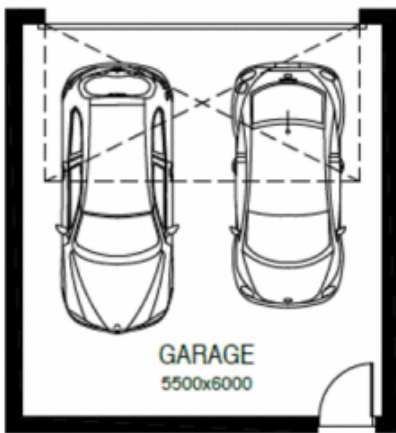
Price : \$595 PW | \$2,585 PCM
Land Size : 178 sqm
View : <https://www.ypa.com.au/8640976>



Brylee Montero
0497 972 972



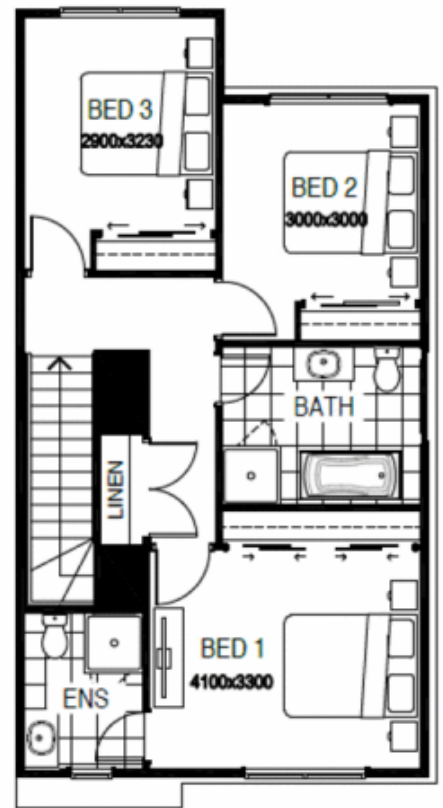
Alexandra Pace
0499 974 273



(not shown in position)



GROUND FLOOR



FIRST FLOOR