



## 52 Springlake Avenue Caroline Springs VIC

5 🏠 2 🚗 2 🚗

Offered to the market for the very first time, this exceptional residence is superbly positioned in one of Caroline Springs' most tightly held and sought-after pockets. Set on an expansive 704m<sup>2</sup> (approx.) allotment, this beautifully maintained family home delivers the perfect balance of space, practicality and lifestyle. Thoughtfully designed for growing families, the versatile floorplan showcases multiple living zones, generous accommodation and seamless indoor-outdoor integration-creating a home that is both functional and inviting. With public transport, picturesque parklands, quality schools, Caroline Springs Town Centre and direct access to the Western Freeway just moments away, the location offers outstanding convenience alongside a relaxed suburban lifestyle.

**Price** : \$ 982,500  
**Land Size** : 704 sqm  
**View** : <https://www.ypa.com.au/8640449>



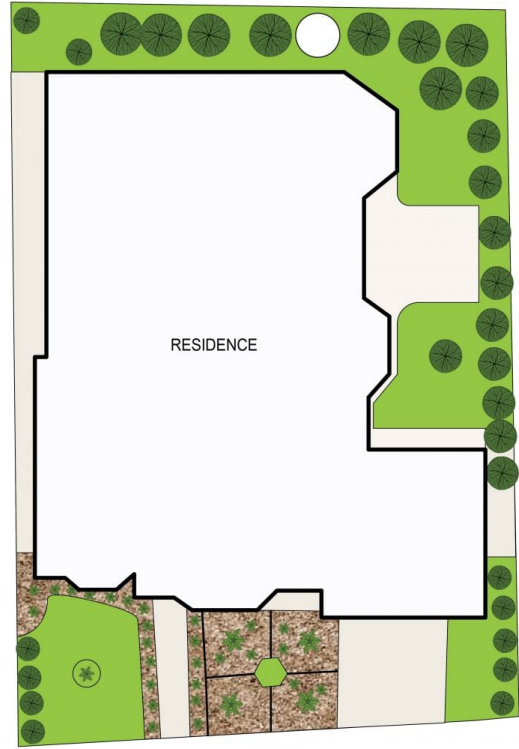
**Andrew Migliorisi**  
0432 526 844



**Ajet Jumeri**  
0450 940 041

### Property Highlights

? Expansive master retreat complete with walk-in robe and



SITE PLAN  
(NOT TO SCALE)



## 52 Springlake Avenue, Caroline Springs

DISCLAIMER : ALL DIMENSIONS ARE AN APPROXIMATION ONLY AND NO GUARANTEE IS GIVEN WITH RESPECT TO ACCURACY.