



29 Shea Street Bacchus Marsh VIC

4 2 2

Welcome to 29 Shea Street, Bacchus Marsh - set on a 660m² block (approx.) this beautifully renovated home blending modern style with timeless character, fit for a growing family, right in the heart of town.

Price : \$ 635,000

Land Size : 659 sqm

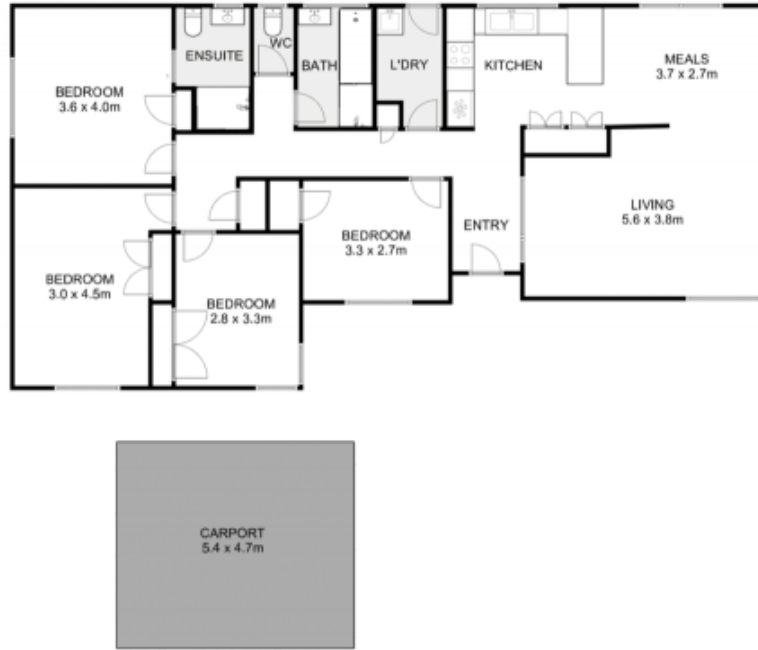
View : <https://www.ypa.com.au/8629011>

From the moment you step inside, you'll appreciate the warmth of the gorgeous original hardwood timber floors, professionally polished to showcase their natural beauty. The light-filled lounge greets you at the front of the home, complete with a recently serviced wall furnace and split system featuring a ducted air transfer system to all bedrooms, ensuring year-round comfort. New downlights throughout add a fresh, contemporary touch.

The stunning new kitchen is both spacious and stylish, offering two generous storage cupboards, brand-new dishwasher, oven and stovetop, and striking stone



Jodi Nash
0419 342 120



29 Shea Street, Bacchus Marsh



Whilst every attempt has been made to ensure the accuracy of the floor plan contained here, measurements of doors, windows, rooms and any other items are approximate and no responsibility is taken for any error, omission, or mis-statement. This plan is for illustrative purposes only and should be used as such by any prospective purchaser. The services, systems and appliances shown have not been tested and no guarantee as to their operability or efficiency can be given.

