



## 16 Somerton Crescent ST ALBANS VIC

4  2  4 

Proudly elevated and immaculately maintained, 16 Somerton Crescent presents a spacious brick veneer home designed for comfortable family living in one of St Albans' most sought-after pockets.

Step inside to discover four generous bedrooms, including a master with private ensuite, complemented by a welcoming formal living zone at the front of the home. At its heart, a spacious family room flows seamlessly into the meals area and well appointed kitchen, creating the perfect central hub for everyday living and entertaining.

Outdoors is where this property truly shines. A neat, well-kept backyard is highlighted by a superb pergola - ideal for year round gatherings with family and friends. Car accommodation is exceptional, offering a large carport, lock-up garage and an extended driveway providing ample

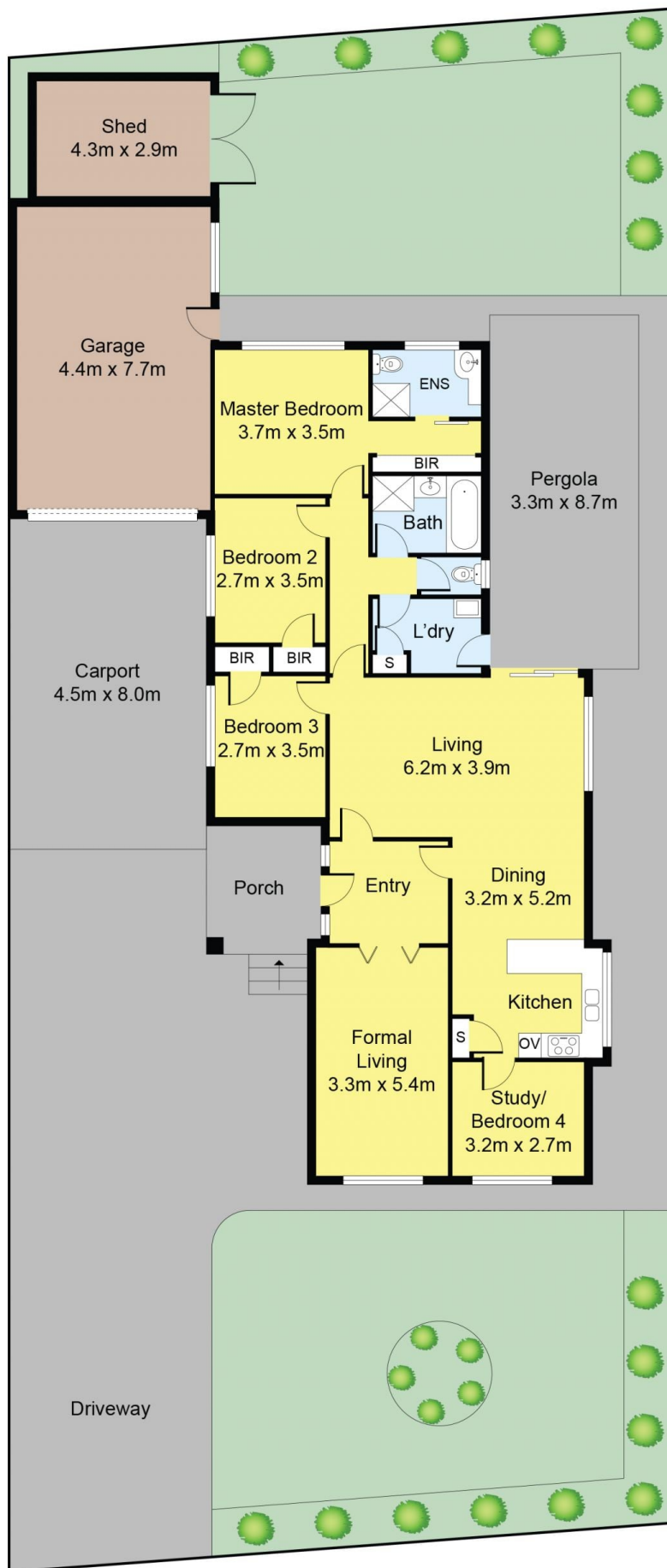
**Price** : Under Offer  
**Land Size** : 571 sqm  
**View** : <https://www.ypa.com.au/8628126>



**Gioan Pham**  
0422 804 082



**Tracy Pham**  
0406 107 891



Disclaimer: Whilst we believe the contents of this document to be accurate, we suggest the prospective purchasers make any necessary enquiries to satisfy themselves. All measurements are approximate. We do not accept responsibility for any errors or omissions.

**16 Somerton Crescent, St Albans**

