



73 Palm Tree Drive Safety Beach VIC

3  2  2 

Backing directly onto the lush fairways and peaceful waterways of the Safety Beach Country Club, this impeccably maintained residence offers a lifestyle of absolute tranquillity. This is a home where your morning coffee comes with a view of the greens and the evening breeze carries the scent of the nearby salt air.

THE HEART OF THE HOME

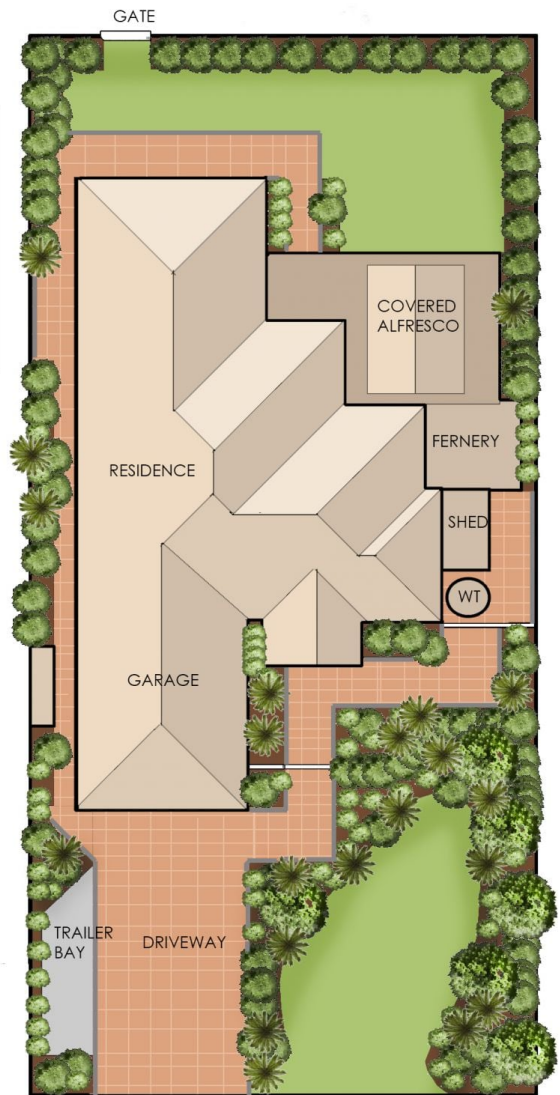
Step inside through a welcoming entry porch into an expansive domain anchored by stunning polished timber floorboards. The light-filled home features three distinct living zones to cater to every family need:

Family & Meals Hub: A central open-plan space perfect for daily life, flowing seamlessly from the kitchen to the outdoors.

Price : \$ 1,100,000
Land Size : 648 sqm
View : <https://www.ypa.com.au/8627871>



Ryan Oswald
0402 720 822



73 Palm Tree Drive, Safety Beach

The floor plan is provided for general information and illustrative purposes only. All measurements, dimensions, and layouts are approximate and may vary from the actual property. While every effort has been made to ensure accuracy, no responsibility is taken for any error, omission, or misstatement. Prospective buyers should not rely solely on the floor plan and are encouraged to conduct their own inspections and verify all details independently. The design and content of this floor plan remain the property of DND Floor Plans. ©