



28 Saddlebred Avenue Werribee VIC

5 3 2

YPA Point Cook Proudly Presents a showcasing an exceptional layout, refined finishes, and an impressive list of upgrades, 28 Saddlebred Avenue, Werribee is a beautifully designed family residence that delivers space, comfort, and versatility on a grand scale. Thoughtfully planned to accommodate large or multi-generational families, this home combines intelligent zoning with luxurious inclusions to create a lifestyle of effortless living.

Upon entry, the home immediately impresses with high ceilings, downlights throughout, and a sense of openness enhanced by natural light and soft sheer curtains. To the front of the home, a private formal lounge offers a peaceful retreat, ideal for entertaining guests, relaxing, or creating a dedicated media or quiet living space. Adjacent to this zone is Bedroom Five, complete with robe access, making it ideal for guests, extended family, or a home office.

Price : \$ 920,000
Land Size : 606 sqm
View : <https://www.ypa.com.au/8627373>

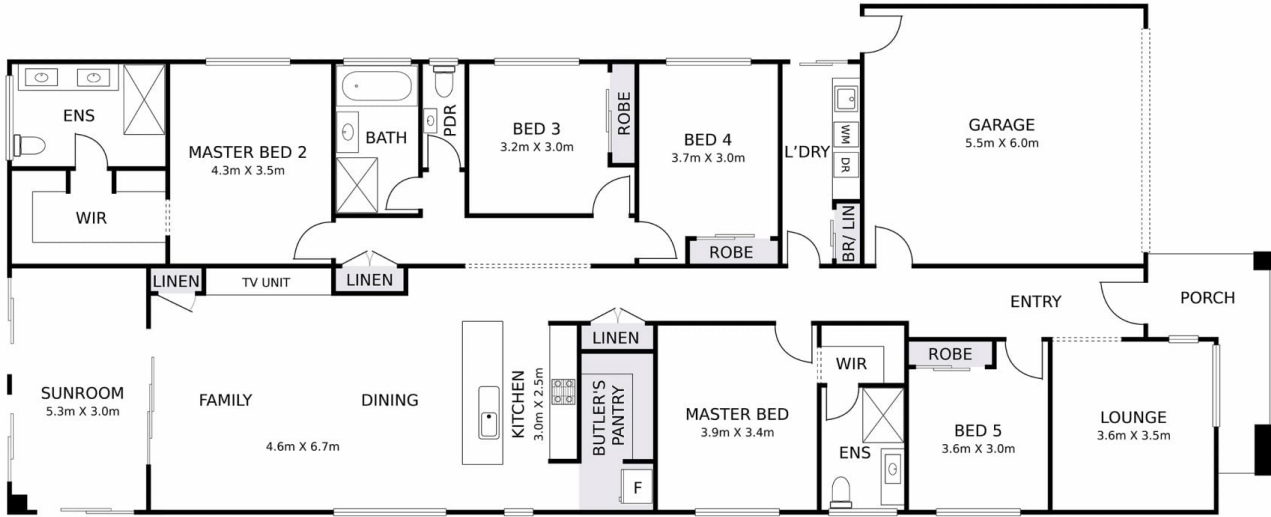


Pardeep Chahal
0431 595 725



Vishesh Lather
0470 618 967

28 SADDLEBRED AVENUE, WERRIBEE



DISCLAIMER: THIS FLOOR PLAN IS A VISUAL GUIDE ONLY AND MAY CONTAIN INACCURACIES IN MEASUREMENTS, LAYOUT, ROOM NAMES OR FEATURES. NO WARRANTY IS GIVEN AS TO ITS ACCURACY. INTERESTED PARTIES MUST CONDUCT THEIR OWN DUE DILIGENCE.

ypa