



## 22 Townville Crescent Hoppers Crossing VIC

4 2 2

Here is your chance to secure a beautifully presented family home in a tightly held, high-demand location-where space, comfort, and convenience come together on a generous allotment of approximately 650m<sup>2</sup>.

**Price** : \$ 815,000  
**Land Size** : 650 sqm  
**View** : <https://www.ypa.com.au/8625746>

From the moment you step inside, the home feels warm and inviting, filled with natural light thanks to its prized north-facing aspect. Designed for real family living, the layout delivers two distinct living zones-a formal lounge for quiet relaxation, flowing through to a spacious open-plan family and dining area that becomes the heart of the home.

Anchoring it all is the renovated kitchen, expertly updated with quality finishes and a stainless-steel appliance range, perfectly positioned for effortless entertaining and everyday ease. The master suite offers the privacy and comfort you deserve, complete with a walk-in robe and a renovated

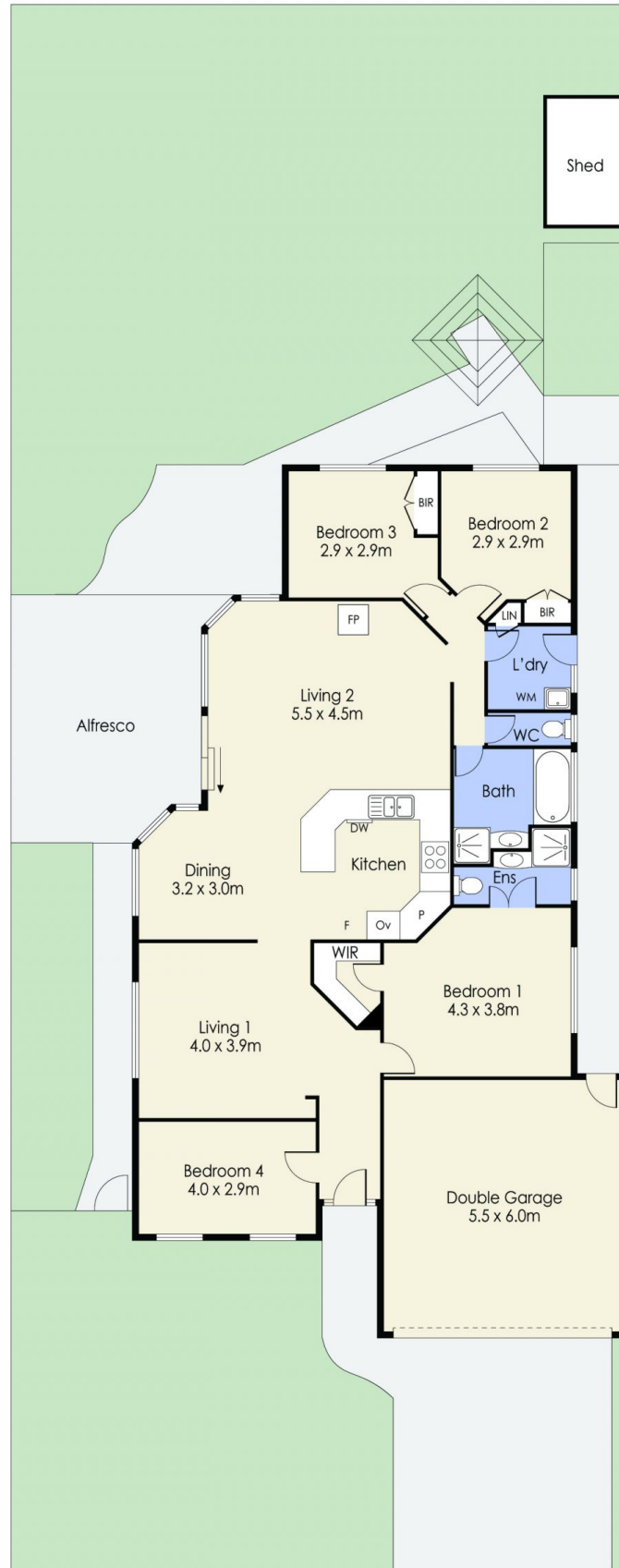


**Abdul Merabi**  
0424 263 506



**Danish Natha**  
0405 857 895

# 22 Townville Crescent, HOPPERS CROSSING



Whilst every attempt has been made to ensure the accuracy of the floor plan contained here, measurements of doors, windows, rooms and any other items are approximate and no responsibility is taken for any error, omission, or mis-statement. This plan is for illustrative purposes only and should be used as such by any prospective purchaser. The services, systems and appliances shown have not been tested and no guarantee as to their operability or efficiency can be given.