

67 Dalray Crescent Kurunjang VIC

3  2  2 

This stunning family home is positioned in the Thoroughbred Park Estate in Kurunjang on a generous 800m² (approx.) parcel of land, nearby to local parklands, schools, public transport, and shops. This amazing home provides plenty of space for everyone and the potential for wide side access.

Price : \$ 700,000
Land Size : 800 sqm
View : <https://www.ypa.com.au/8621448>

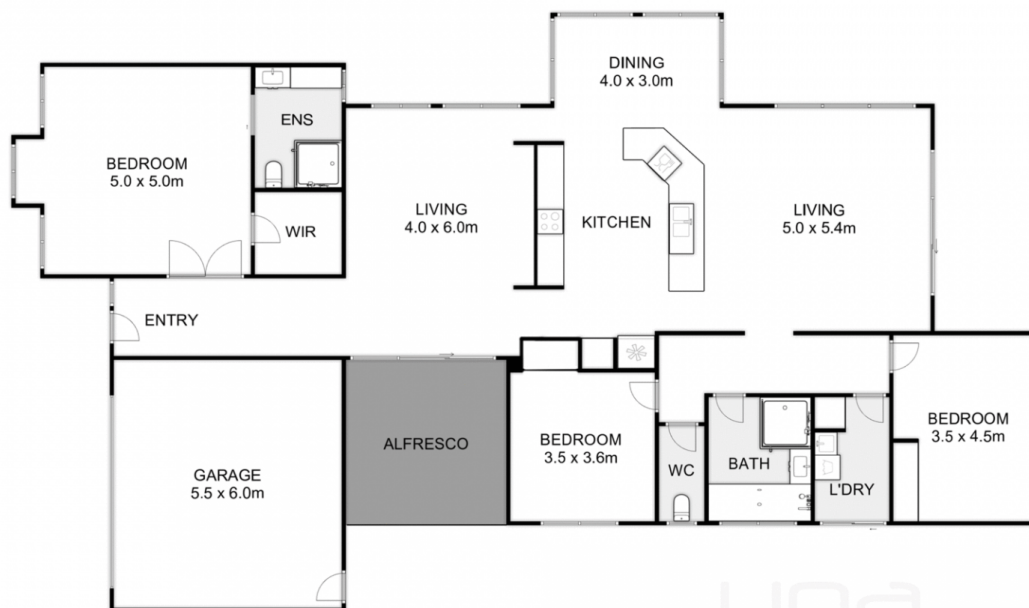
This exceptional property features the follow:

- ? Three oversized bedrooms
- ? Two separate sun drenched living areas
- ? Stunning kitchen with updated appliances
- ? Under roofline alfresco
- ? Sectioned off yard areas allowing space for entertaining and space for pets.
- ? Established garden beds and trees

Additional upgrades include; upgraded architraves and



Mark Edwards
0422 017 068



67 Dalray Crescent, Kurunjang

Whilst every attempt has been made to ensure the accuracy of the floor plan contained here, measurements of doors, windows, rooms and any other items are approximate and no responsibility is taken for any error, omission, or mis-statement. This plan is for illustrative purposes only and should be used as such by any prospective purchaser. The services, systems and appliances shown have not been tested and no guarantee as to their operability or efficiency can be given.

