



133 Hoffmans Road NIDDRIE VIC

2 1 4

Superbly positioned in the heart of Niddrie and within proximity to all local amenities, this original weatherboard home presents an outstanding opportunity for renovators, investors, and developers alike.

Set on approximately 477m² of land, the property offers exciting scope to renovate and restore its charm, extend and enhance to suit modern living, or redevelop and build your dream home (STCA).

Conveniently located just moments from public transport, quality schools, parklands, shopping precincts, cafés and easy freeway access, this is a rare chance to secure a blue-chip site in a highly sought-after pocket.

Whether you're looking to create, invest, or build anew, renovate and/or extend, the possibilities here are truly

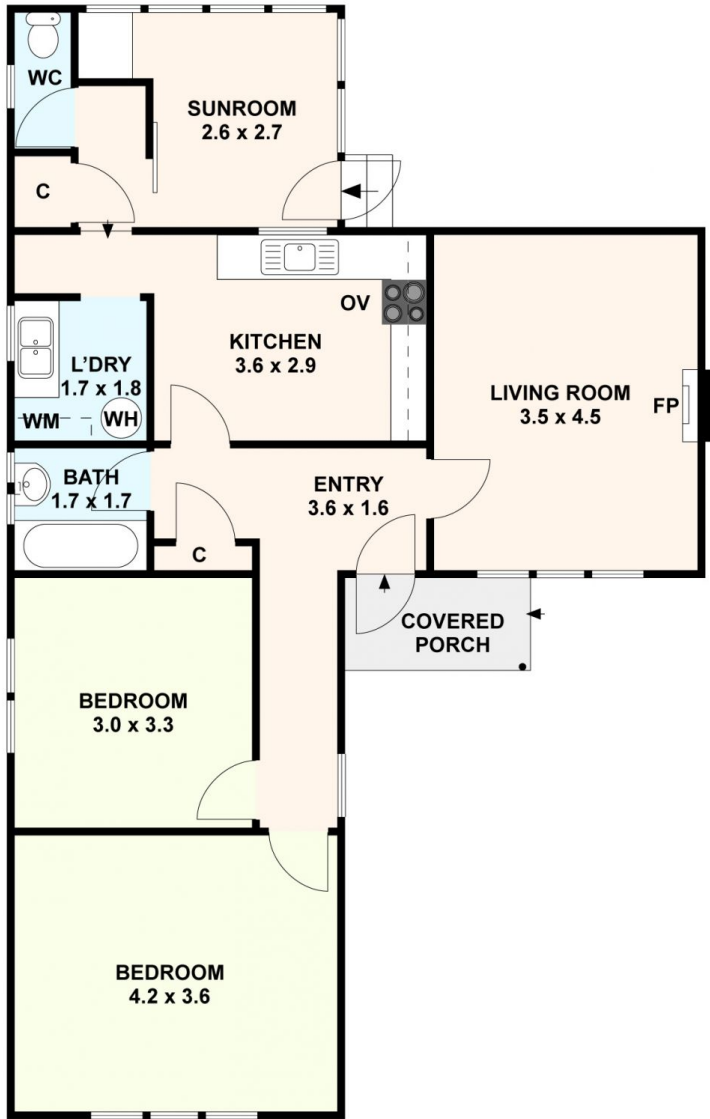
Price : \$850,000 - \$890,000
Land Size : 477 sqm
View : <https://www.ypa.com.au/8620953>



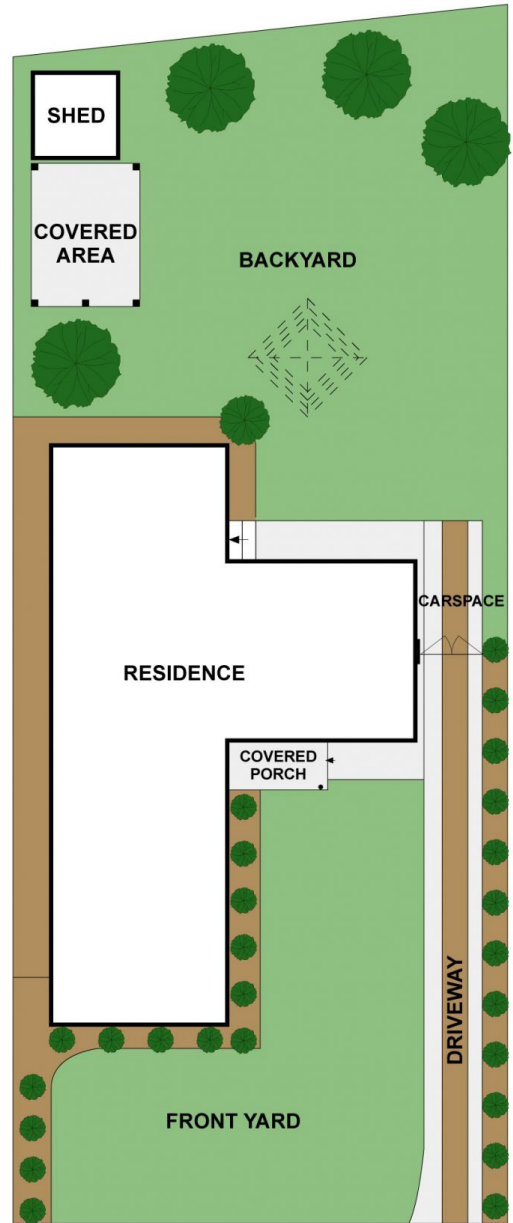
Sam D'Angelo
0403 117 765



Shari Jansz
0405 856 467



GROUND FLOOR



SITEPLAN

133 Hoffmans Road, Niddrie
 All data and dimensions shown in this sketch are approximate.

