



1/22 Palm Grove Dromana VIC

4 1 1

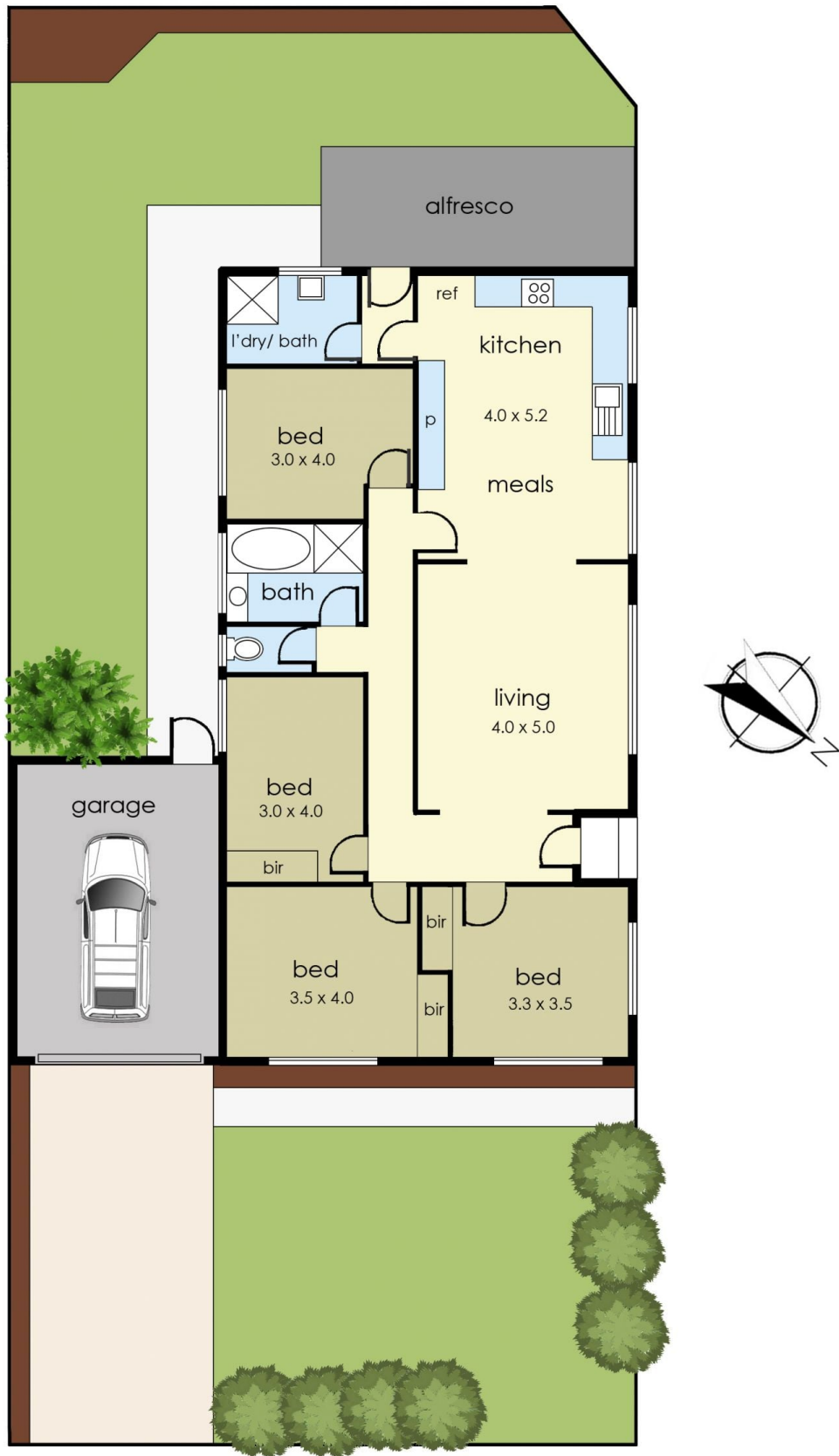
Boasting a coveted beachside location ideal for both year-round living and seasonal retreats, this front residence of two presents a classic brick design enhanced by tasteful updates that respect its retro character. With four spacious bedrooms and a flowing layout that connects each living zone with ease, the home is well suited to young families or couples seeking space, comfort, and low-maintenance living.

Just blocks from Dromana Village and the shallows of Dromana Beach, the home's coastal feel continues inside, highlighted by fresh white paint, new blinds, and sheer curtains throughout. A central hallway separates the accommodation from the living areas, offering a traditional lounge alongside an open kitchen with space for meals. Original retro tiles and timber wall panelling are retained and complemented by modern cabinetry and stainless steel

Price : \$ 720,000
Building Size : 138 sqm
Land Size : 351 sqm
View : <https://www.ypa.com.au/8620473>



Tracey Hedin
0407 429 696



1/22 Palm Grove, Dromana

The floor plan is provided for general information and illustrative purposes only. All measurements, dimensions, and layouts are approximate and may vary from the actual property. While every effort has been made to ensure accuracy, no responsibility is taken for any error, omission, or misstatement. Prospective buyers should not rely solely on the floor plan and are encouraged to conduct their own inspections and verify all details independently. The design and content of this floor plan remain the property of DND Floor Plans. ©