



83 Bamford Avenue Westmeadows VIC

4 3 2

Full of warmth, character, and natural light, 83 Bamford Avenue, Westmeadows is a home that immediately captures the heart. Proudly set on a prized corner block with a sunny north-facing orientation, this solid brick residence enjoys glorious natural light throughout the day and sweeping elevated views from the upstairs level ? a peaceful outlook you'll never tire of.

From the moment you arrive, the gorgeous private front yard creates a lasting impression. Framed by established greenery and seasonal blooms, it offers a tranquil sanctuary to enjoy your morning coffee, watch the sunset, or simply relax in complete privacy.

Inside, the home unfolds with inviting charm. A welcoming formal lounge with a cosy fireplace sets the scene for intimate winter evenings and relaxed family gatherings. The adjoining sunken living area beside the kitchen adds depth and personality, creating warm, connected spaces where

Price : \$ 901,000

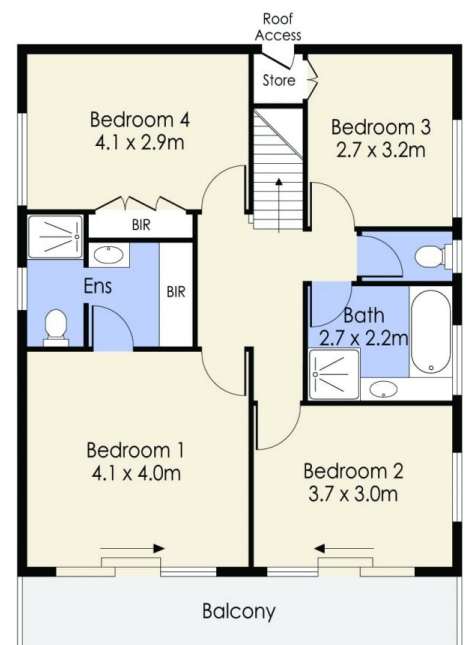
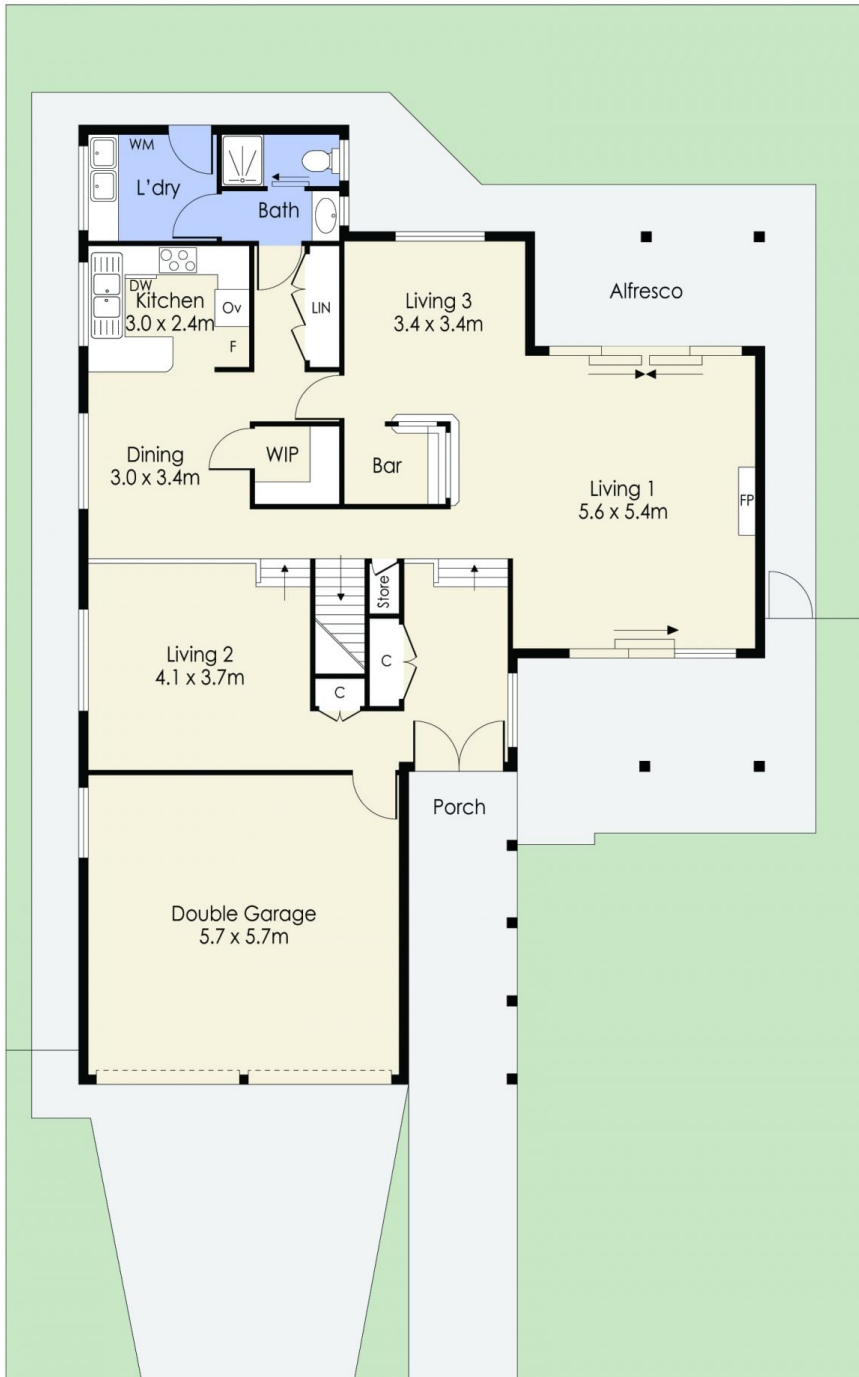
Land Size : 565 sqm

View : <https://www.ypa.com.au/8619785>



Jake Lisner
0437 399 908

83 Bamford Avenue, WESTMEADOWS



Whilst every attempt has been made to ensure the accuracy of the floor plan contained here, measurements of doors, windows, rooms and any other items are approximate and no responsibility is taken for any error, omission, or mis-statement. This plan is for illustrative purposes only and should be used as such by any prospective purchaser. The services, systems and appliances shown have not been tested and no guarantee as to their operability or efficiency can be given.