

33 Sandleford Way Hoppers Crossing VIC

4 2 4

This beautifully presented four-bedroom home offers space, flexibility and everyday comfort in a highly convenient Hoppers Crossing location. Freshly painted with brand-new carpets throughout, the home features a practical and welcoming layout, ideal for families, professionals or those needing extra room to move.

With schools, transport and local amenities all close by, this is a home that truly supports easy living. At the heart of the home, the open-plan kitchen flows through to the meals and family area extending out to a paved outdoor entertaining space, perfect for relaxing or hosting guests.

A separate front lounge provides an additional retreat, while the master bedroom is complete with walk-in robe and ensuite.

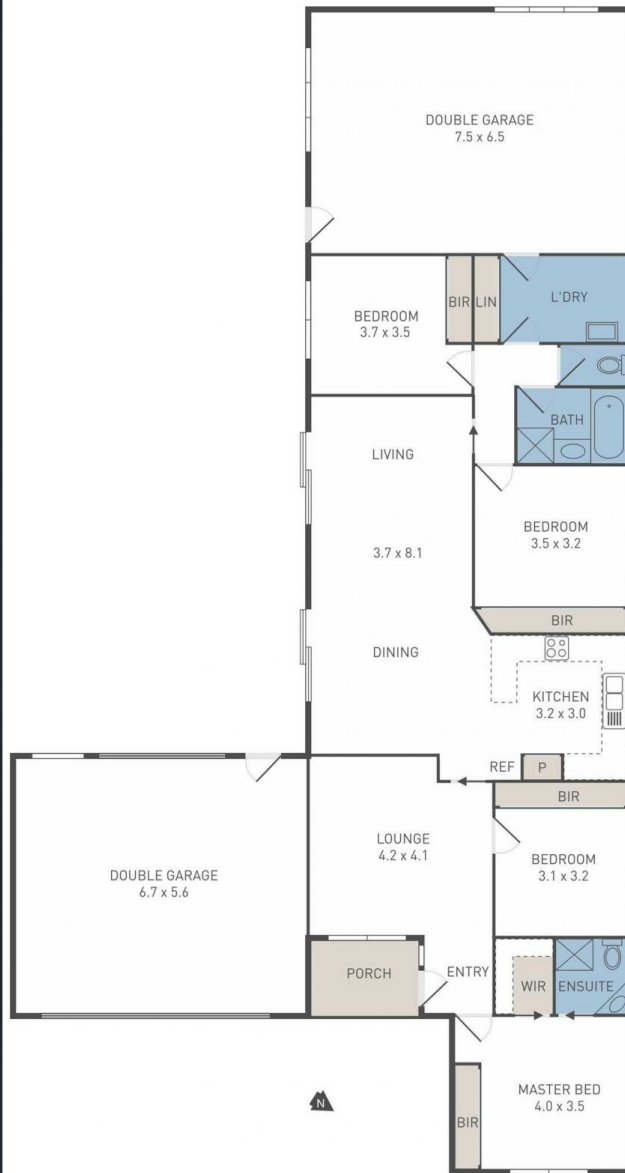
View : <https://www.ypa.com.au/8617608>



Tania Pitt
0480 402 082



Carla Primiano
0407 183 331



The measurements provided herein may not be accurate. In order to satisfy yourself of the exact dimension of each room and the premises generally we advise you conduct your own measurements and/or engage the service of a qualified surveyor.