



26 Clematis Drive Manor Lakes VIC

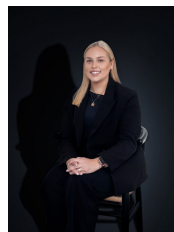
3  2  2 

Situated in the heart of Manor Lakes, this beautiful & stylish residence is awaiting its next proud occupant. With convenience at your doorstep, offering close-proximity to Manor Lakes shopping centre, Wyndham Vale train station, local primary/secondary schools, quality kindergartens & childcare facilities.

View : <https://www.ypa.com.au/8617192>

Property Features:

- ? Oversized master bedroom with ensuite and walk-in robe
- ? Remaining bedrooms fitted with built in wardrobes
- ? Open-plan hostess kitchen/dining/living with dishwasher and stainless steel appliances
- ? Alfresco with decking - perfect for entertaining
- ? Double garage with internal access



Natalie James
0450 803 873