



15 Boneo Road Wyndham Vale VIC

3 2 2

Perfectly positioned in a highly sought-after, family-friendly pocket of Wyndham Vale, this beautifully presented home combines modern comfort with effortless style. Flooded with natural light, the thoughtfully designed floor plan creates an inviting and sophisticated living environment, ideal for everyday family life or entertaining.

Enjoy the convenience of being moments from top schools, Manor Lakes Shopping Centre, public transport, and parklands, while benefiting from a lifestyle of comfort, connectivity, and low-maintenance living. This is a rare opportunity for first-home buyers, growing families, or astute investors to secure a quality home in a premium location where demand is high and lifestyle is unmatched.

? Three generous bedrooms, all with built-in wardrobes, providing comfort and space for the whole family

Price : \$ 580,000
Land Size : 347 sqm
View : <https://www.ypa.com.au/8616487>

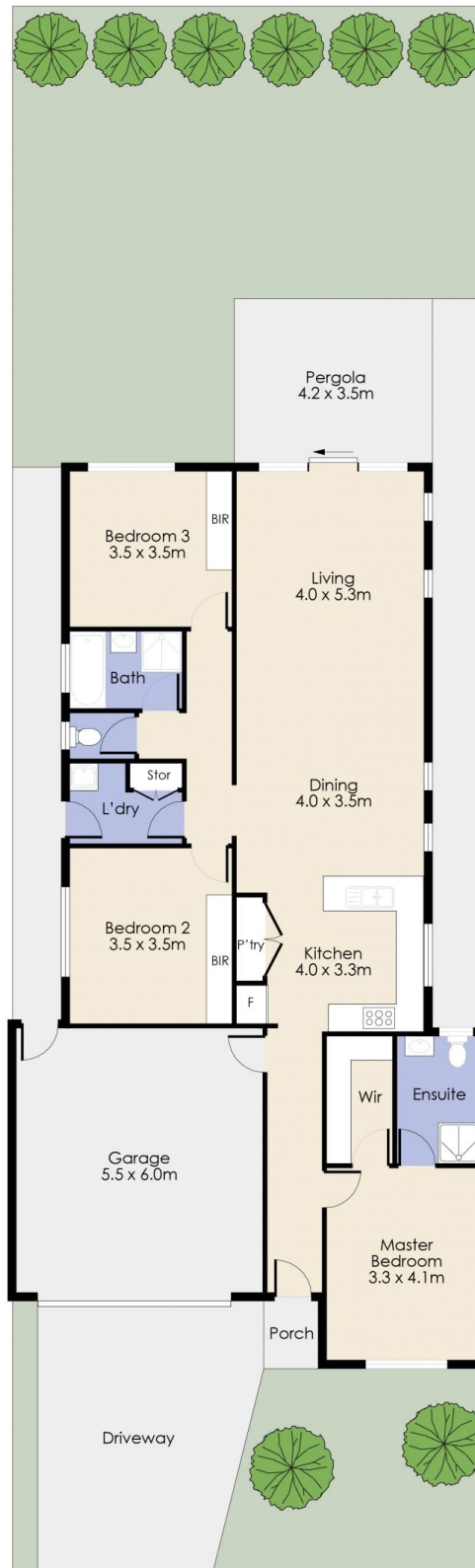


Mitch Smit
0450 913 513



Ibrahim Ahmed
0449 119 577

15 Boneo Road, WYNDHAM VALE



Whilst every attempt has been made to ensure the accuracy of the floor plan contained here, measurements of doors, windows, rooms and any other item are approximate and no responsibility is taken for any error, omission, or misstatement. This plan is for illustrative purposes only and should be used as such by any prospective purchaser. The services, systems and appliances shown have not been tested and no guarantee as to their operability or efficiency can be given.