

20 Cogar Drive Werribee VIC

4 2 2

?A well-presented family home positioned within the sought-after King's Leigh Estate. Offering a practical layout, generous living zones and low-maintenance outdoor space, this home is ideal for families, couples or professionals looking for comfort and convenience in an established Werribee pocket. Designed for easy day-to-day living, the home offers multiple living spaces, well-proportioned bedrooms and a great outdoor entertaining area to enjoy year-round.

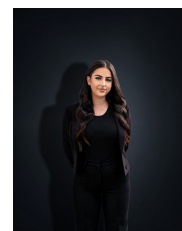
View : <https://www.ypa.com.au/8616004>

Property Features:

- ? Four spacious bedrooms
- ? Master bedroom positioned at the rear of the home, complete with walk-in robe and ensuite
- ? Remaining bedrooms fitted with built-in robes
- ? Well-sized formal lounge located at the front of the home



Ashley Gates
0424 267 675



Stefanie Zahra
0406 871 722