



37 Messina Crescent Taylors Lakes VIC

4 2 4

Set within one of Keilor Lodges most tightly held and highly sought-after pockets, this impressive family residence delivers an exceptional opportunity for those seeking space, flexibility and long-term comfort on approximately 725m². Designed to accommodate the evolving needs of modern family living, the home offers multiple living zones, dual home offices and expansive indoor-outdoor entertaining areas - all in a location that consistently proves its value. Whether you're upsizing or searching for a forever home, this is a property that effortlessly balances practicality with lifestyle and is sure to impress from the moment you step inside.

Property Highlights:

- ? Generous master suite complete with walk-in wardrobe and private ensuite
- ? Three additional spacious bedrooms, all fitted with built-in

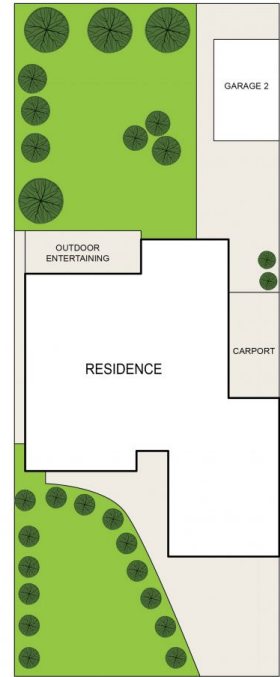
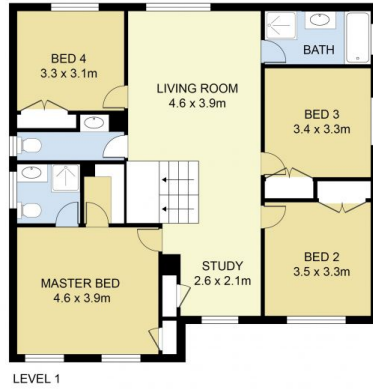
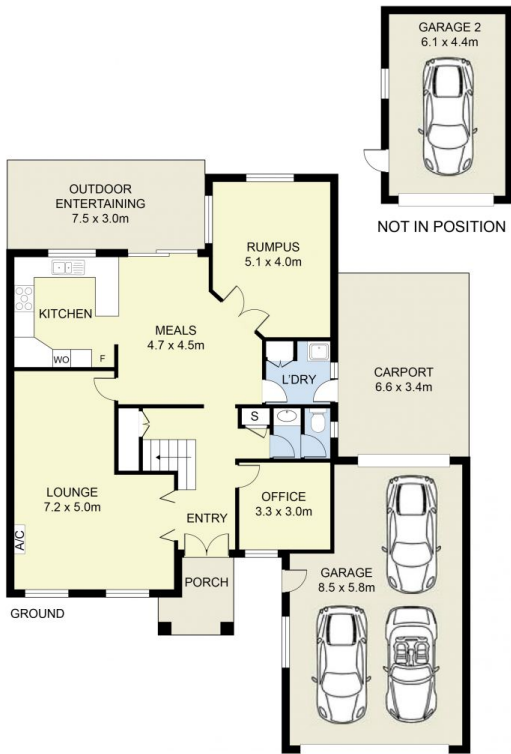
Price : \$ 1,050,000
Land Size : 725 sqm
View : <https://www.ypa.com.au/8608840>



Andrew Migliorisi
0432 526 844



Ajet Jumeri
0450 940 041



SITE PLAN
(NOT TO SCALE)



37 Messina Crescent, Taylors Lakes

DISCLAIMER : ALL DIMENSIONS ARE AN APPROXIMATION ONLY AND NO GUARANTEE IS GIVEN WITH RESPECT TO ACCURACY.