



39 Eiffel Avenue Bonnie Brook VIC

3 2 1

Discover an outstanding opportunity to secure a stylish, low-maintenance home in the highly sought-after Monument Estate, perfectly positioned in the fast-growing suburb of Bonnie Brook. Ideal for first home buyers, downsizers or astute investors, this quality-built residence offers modern comfort, everyday convenience and excellent long-term potential. Enjoy a lifestyle of ease with scenic wetlands, parklands, walking trails, schools, shops and public transport all close by, along with a host of exciting future amenities set to further enhance this thriving community.

Property Features Include:

- ? Generous master bedroom complete with walk-in robe and private ensuite
- ? Two additional well-sized bedrooms, each with built-in wardrobes

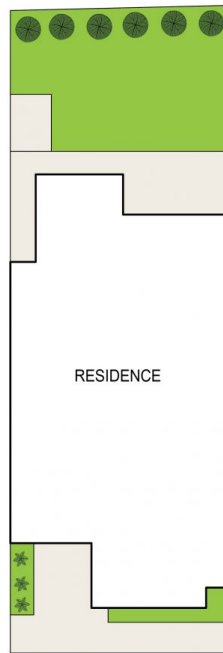
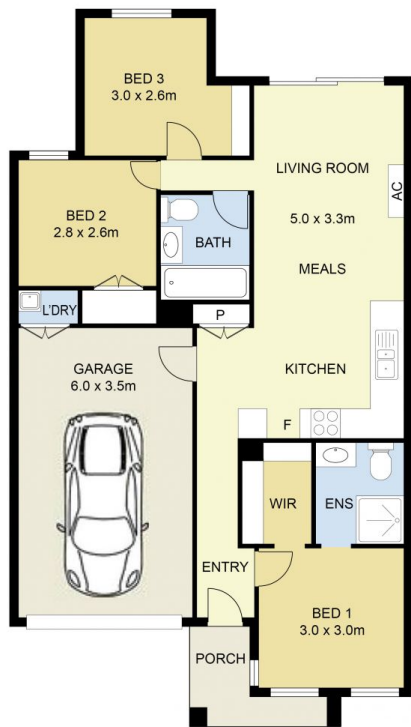
Price : \$ 520,000
Land Size : 212 sqm
View : <https://www.ypa.com.au/8605543>



Andrew Migliorisi
0432 526 844



Ajet Jumeri
0450 940 041



SITE PLAN
(NOT TO SCALE)

39 Eiffel Avenue, Bonnie Brook



DISCLAIMER : ALL DIMENSIONS ARE AN APPROXIMATION ONLY AND NO GUARANTEE IS GIVEN WITH RESPECT TO ACCURACY.