

3 Clear Drive Tarneit VIC

4 2 2

Modern Elegance Meets Ultimate Connectivity in The Grove Estate

3 Clear Drive, Tarneit is more than just a house; it's a masterclass in contemporary family living. Whether you are a first-home buyer, a growing family, or a savvy investor, this beautifully designed residence offers a seamless blend of style, space, and a high-growth location.

The Master Retreat

Upon entry, the home welcomes you with a sense of calm and sophistication. To the left, the primary master suite serves as a secluded sanctuary for parents, featuring plush premium carpets, a generous walk-in robe, and a spa-like private ensuite.

The Heart of the Home

Flowing effortlessly down the hallway, the home opens up

Price : \$ 654,000

View : <https://www.ypa.com.au/8600388>

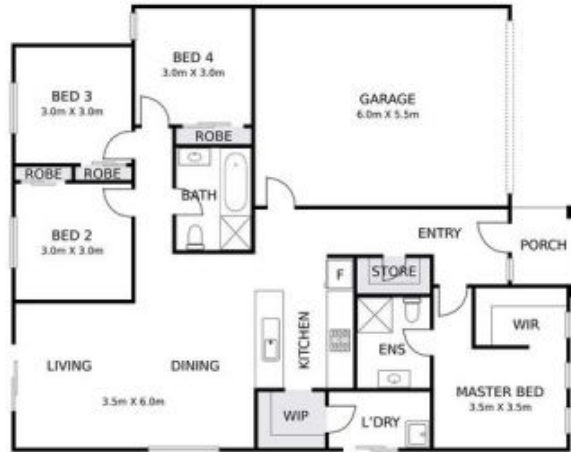


Jaalpa Patel
0433 401 666



Jerry Jacob
0404 727 772

3 CLEAR DRIVE, TARNEIT



DISCLAIMER, PLEASE NOTE FLOOR PLAN IS INDICATIVE ONLY AND NOT DRAWN TO EXACT SCALE.
ALL DIMENSIONS ARE APPROX AND FOR ILLUSTRATION ONLY

ypa