

## 16 Knightsbridge Avenue Altona Meadows VIC

3 1 2

YPA Point Cook proudly presents 16 Knightsbridge Avenue Altona Meadows VIC 3028? a superbly appointed family residence that sets an immediate benchmark for quality, space and lifestyle. Set in the heart of Altona Meadows and surrounded by lifestyle conveniences that truly elevate everyday living, this impressively maintained family home delivers outstanding comfort, space and long-term appeal on a generous 580m<sup>2</sup> allotment. With direct access to Skeleton Creek Trail, nearby parklands, Central Square Shopping Centre, community facilities and seamless freeway connectivity, the location alone makes a compelling statement ? and the home itself more than lives up to it.

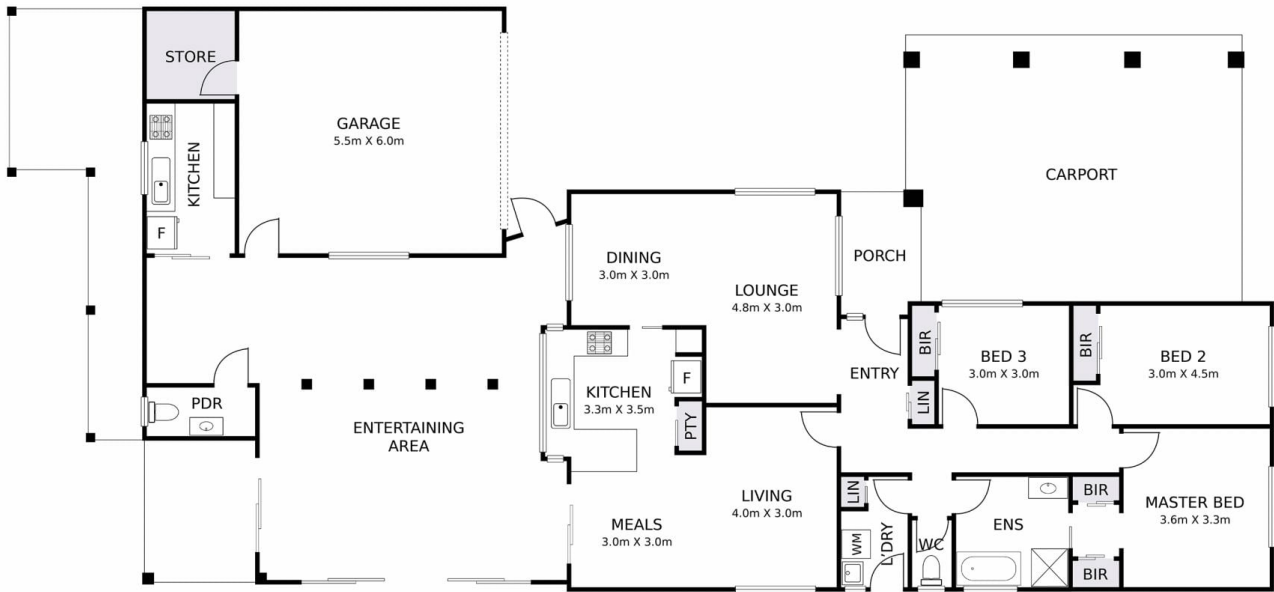
From the moment you arrive, the home's welcoming presence and thoughtful layout are evident. Designed to seamlessly balance indoor proportions with expansive

**Price** : \$ 860,000  
**Land Size** : 580 sqm  
**View** : <https://www.ypa.com.au/8594337>



**Pardeep Chahal**  
0431 595 725

16 KNIGHTSBRIDGE AVE, ALTONA MEADOWS



DISCLAIMER: THIS FLOOR PLAN IS A VISUAL GUIDE ONLY AND MAY CONTAIN INACCURACIES IN MEASUREMENTS, LAYOUT, ROOM NAMES OR FEATURES. NO WARRANTY IS GIVEN AS TO ITS ACCURACY. INTERESTED PARTIES MUST CONDUCT THEIR OWN DUE DILIGENCE.

ypa